

TABLE OF CONTENTS

| | |
|---------------|---------------------------------------|
| ITEM 1 | WELCOME AND INTRODUCTIONS |
| ITEM 2 | APOLOGIES AND LEAVE OF ABSENCE |
| ITEM 3 | DECLARATIONS OF INTEREST |
| ITEM 4 | REPORTS |
| ITEM 5 | GENERAL BUSINESSES |
| ITEM 6 | NEXT MEETING |

ITEM 1 WELCOME AND INTRODUCTIONS

Councillor Alan le Surf opened the Meeting and introduced those present. Prior to the start of the meeting a representation from residents of Seaview Street / White Street spoke to the Committee. The discussion from this meeting is included in General Business.

ITEM 2 APOLOGIES AND LEAVE OF ABSENCE

None

ITEM 3 DECLARATIONS OF INTEREST –

PECUNIARY

None

NON- PECUNIARY

None

ITEM 4 REPORTS

ITEM 10/13 THE CORSO, MANLY – PROPOSED CHANGES TO THE TIMES OF OPERATION FOR THE EXISTING LOADING ZONE (Item 10/13: 11/3/13)

SUMMARY

For Council to consider changing the times of operation for the existing 15 minutes Loading Zone outside Coles on The Corso, Manly.

REPORT

A Councillor has raised as a question without notice that the 15 minute Loading Zone outside Coles in the Corso operates at all times unlike other loading zones within the CBD area which become available for parking after 6pm (refer to Figure 1).

It is proposed to change the hours of operation of the 15 minute Loading Zone from all hours to 6am to 6pm every day and to restrict parking to ½ hour within the loading zone between 6pm and 10pm, every day.

The proposal would make 2 parking spaces available over night for public use. .

DISCUSSION

The item was briefly discussed and the committee agreed to the recommendation.

RECOMMENDATION

It is recommended that Council change the time of operation of the existing 15 minutes Loading Zone outside Coles within the Corso to 15 minutes Loading Zone, 6am-6pm and ½ hour parking between 6pm and 10pm every day. This change subject to consultation with affected residents and businesses.



Figure 1: Proposed Change to the times of operation for the existing Loading Zone – The Corso, Manly

ITEM 11/13 DARLEY ROAD, MANLY – PROPOSED CHANGE TO THE DAYS OF OPERATION FOR THE EXISTING MAIL ZONE (Item 11/13: 11/3/13)

SUMMARY

For Council to consider changes to the days of operation of the existing Mail Zone in Darley Road.

REPORT

Australia Post has requested that the days of operation for the "Mail Zone" outside No.1 Darley Road, Manly be changed from Monday to Saturday to Sunday to Friday. This is because they do not have a collection on Saturday but do have a collection on the Sunday (refer to Figure 1).

It is proposed that the existing "Mail Zone, Mon-Sat" signs be replaced with Mail Zone, 6am -7pm Sun-Fri. Also, it is proposed that Saturday parking be restricted to ½ Hour, 8am-6pm to be consistent with other restrictions in the vicinity.

The proposal would have a minimal impact on parking for the public but is essential for the Australia post to safely operate their service.

DISCUSSION

The Committee supported the proposed change of days of operation.

RECOMMENDATION

It is recommended that Council approve the changed days of operation of the Mail Zone in Darley Road to Sunday to Friday and the introduction of ½ hour parking in this space between 8am and 6pm on a Saturday.

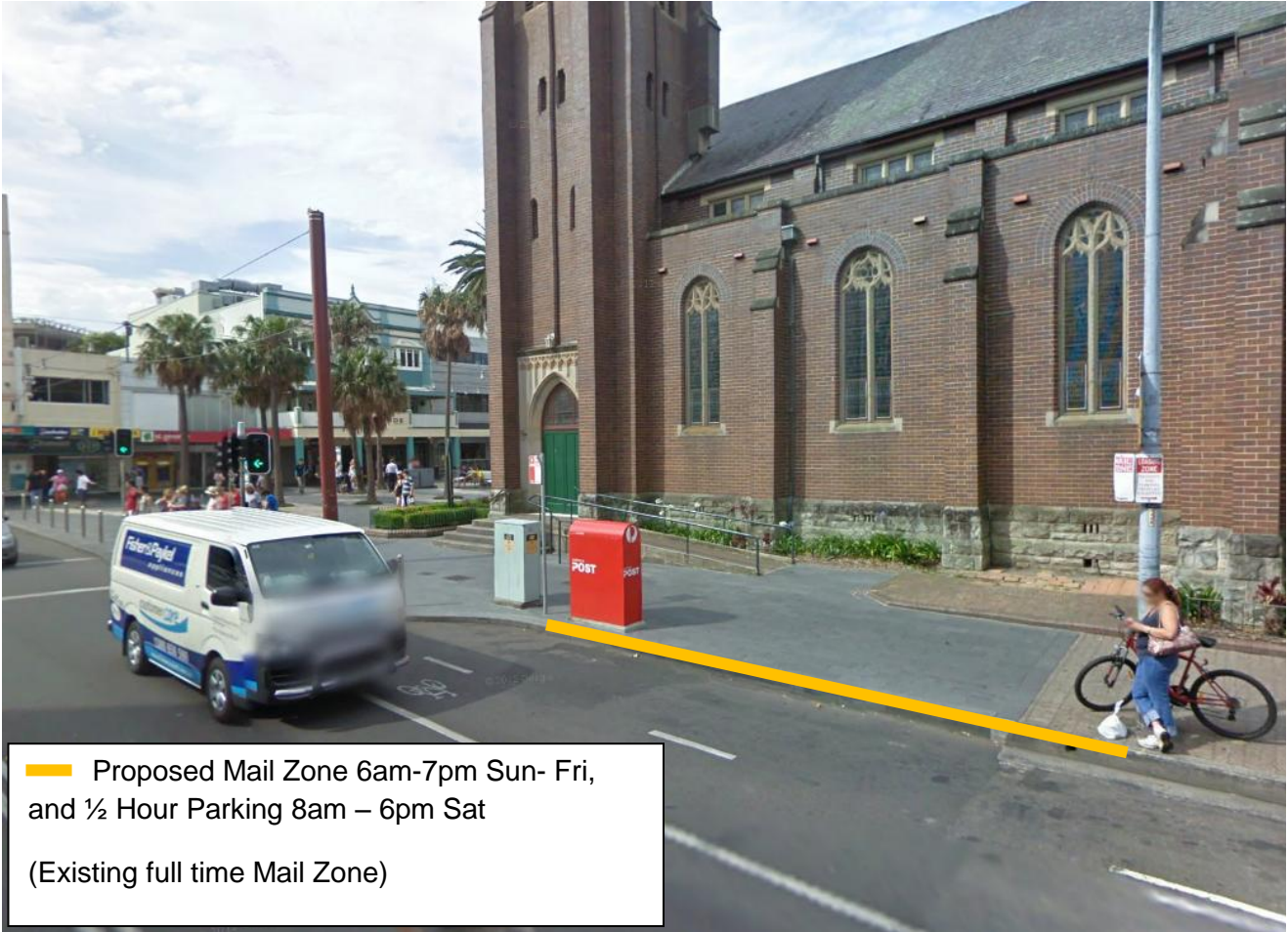


Figure 1: Proposed changes to the days of operation of the existing Mail Zone – Darley Road

ITEM 12/13 SYDNEY ROAD, MANLY – REQUEST FOR THE REMOVAL OF THE NO STOPPING, SATURDAY RESTRICTION OPPOSITE 46 SYDNEY ROAD (Item 12/13: 11/3/13)

SUMMARY

For Council to consider changing the parking restriction opposite 46 Sydney Road.

REPORT

Council has received a request from a resident to remove the existing “No Stopping 7am-5pm Saturdays” restriction, opposite 46 Sydney Road. It has been raised that the markets that used to require this area are no longer operating on Saturdays.

The parking spaces in this location are not ideal for car use because of a line of bollards (refer to Figure 1). This area was originally intended to be a pedestrian crossing but over time has been used as short stay parking. Council has received a number of requests to provide an increased number of motorcycle parking spaces within the CBD. This area would provide a good location for a motorcycle parking area.

It is recommended that the existing “No Stopping 7am-5pm Saturday” and “5 Minute parking, all other times” be replaced with “Motorbike Only Parking” spaces. This area would accommodate about 10 motorbike spaces.

The proposal would result in loss of two parking spaces; however, it would provide 10 motorbike spaces.

DISCUSSION

The committee discussed parking in this location and concluded that as this area is likely to be redeveloped in the short term these parking spaces should revert to ½ hour parking so that motorcycle parking does not need to be removed from this location in a few months time.

RECOMMENDATION

It is recommended that Council change the parking restriction opposite 46 Sydney Road to be 5 minute parking at all times.



Figure 1: Proposed introduction of "Motorbike Only Parking" spaces - Sydney Rd, Manly

ITEM 13/13 HARLAND STREET, BALGOWLAH – INSTALLATION OF NO PARKING SIGNS OUTSIDE THE CEMETRY (Item 13/13: 11/3/13)

SUMMARY

For Council to consider installation of No Parking signs on the grass verge adjacent to the cemetery.

REPORT

Council has received complaints from residents about parking on the grass verge beside the cemetery in Harland Street. To address these concerns it is proposed that a No Stopping restriction is installed (see figure.1).

There is a soft kerb guttering on the section of Harland Street outside the cemetery which allows vehicles to drive on to the nature strip and park. Parking on the grass verge in Harland Street is contrary to Australian Road Rules, however it is difficult to enforce without signing.

Because parking in this area is not permitted, the introduction of No Stopping would result in no loss of parking spaces. In addition Council has constructed parking bays at the end of Harland Street which provide additional parking spaces that can be used at most times by residents of the street.

DISCUSSION

The committee agreed that parking on the grass verge at this location has been a long term issue and recognised that introducing parking restrictions is a last resort.

RECOMMENDATION

It is recommended that Council install the No Parking signs on the southern side of Harland Street, adjacent to the cemetery subject to consultation with affected residents.



Figure 1: Proposed installation of No Parking signs adjacent to the cemetery – Harland St, Balgowlah

ITEM 14/13 BEATRICE STREET, CLONTARF – PROPOSED NO PARKING RESTRICTION WEEKENDS AND PUBLIC HOLIDAYS (Item 13/13: 11/3/13)

SUMMARY

For Council to introduce a No Parking Weekends and Public Holidays restriction on the western side of Beatrice Street, between Gordon St and Moore St.

REPORT

Council has received a request from a resident to introduce a No Parking restriction on the western side of Beatrice Street between Gordon St and Moore Street on the section that there is no footpath or pedestrian access.

Concern was raised that over last year there has been an increase in the number of resident vehicles parked on the both sides of Beatrice Street. Also, during busy weekends and public holidays, visitors park on both sides in Beatrice Street within the narrow section. This causes delays to traffic as it frequently narrows the road to one way.

Beatrice Street is 6.5m wide between Gordon Street and Moore Street, which is not wide enough for cars parking on both sides. Also, there are some driveways entering the road at an angle that make it necessary to have clear space on either side of the driveways. There is no pedestrian access on the western side of this street between No.27 and Moore Street.

It is recommended to introduce a No Parking Weekends and Public Holidays restriction on the western side of Beatrice Street between No.27 and Moore Street (as shown on Figure.1).

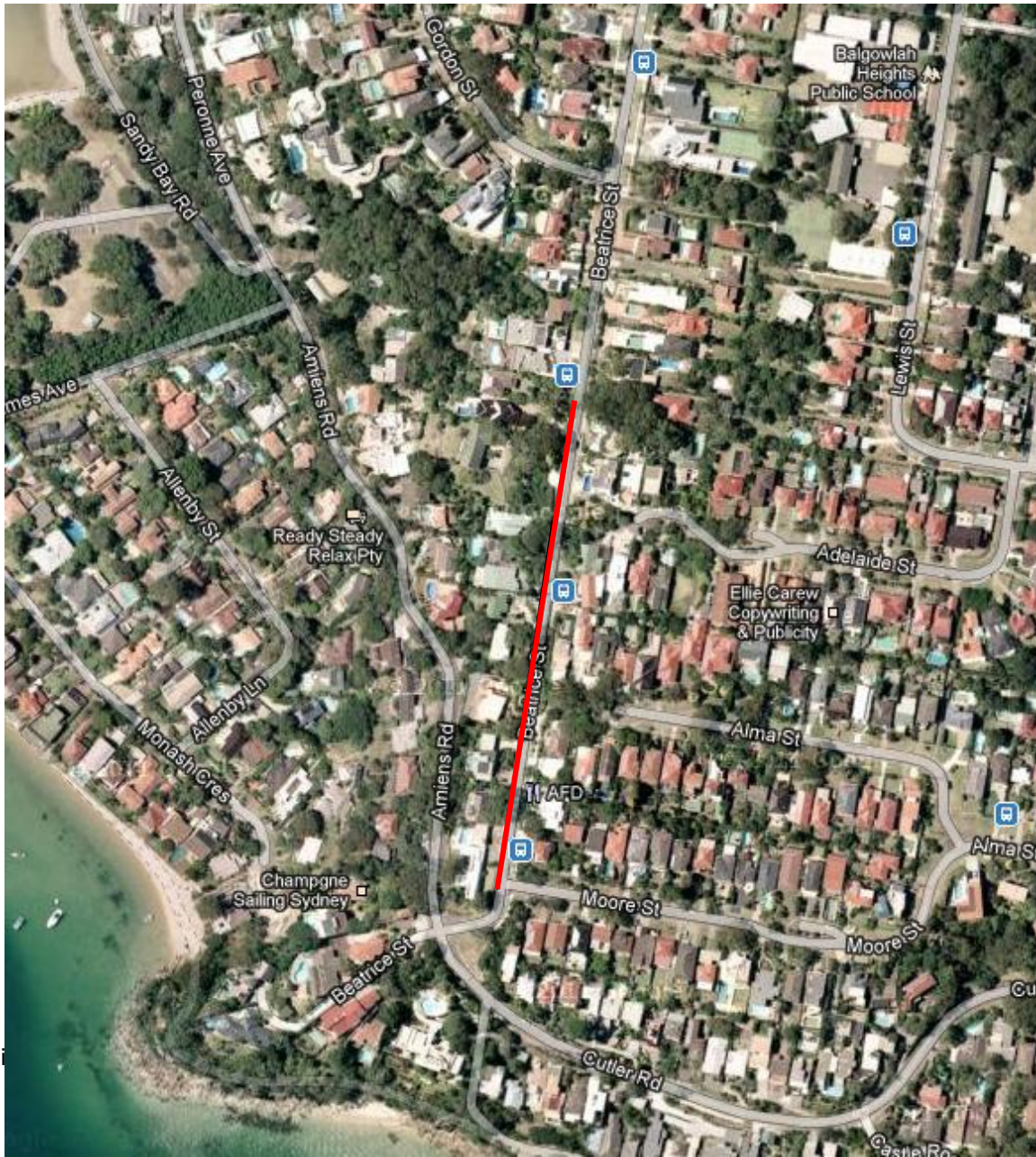
The proposal would result in the loss of some parking spaces. However, the kerbside parking spaces are not generally used by local resident who appreciate that parking in this location causes traffic difficulties.

DISCUSSION

The Committee understood the issue and supported the introduction of a parking restriction.

RECOMMENDATION

It is recommended that Council introduce a No Parking restriction on weekends and public holidays on the western of Beatrice Street between No.27 and Moore Street, subject to consultation with affected resident.



— Proposed No Parking restriction
(Existing unrestricted area)

Figure 1: Proposed No Parking restriction, weekends and public holidays – Beatrice Street

ITEM 15/13 WILLYAMA AVENUE, FAIRLIGHT – REQUEST FOR 10 HOUR PARKING RESTRICTION
(Item 15/13: 11/3/13)

SUMMARY

For Council to introduce a 10 Hour Parking restriction on the bend of Willyama Avenue, Fairlight.

REPORT

Council has received a request from a resident to introduce a 10 Hour Parking restriction on the curve section of Willyama Avenue.

The concern has been raised that boats and trailers park on the curve section of road long term. The resident has stated that this section of road has a blind corner and when trailers and boats park on one side, there is not sufficient room for two cars to pas each other.

Willyama Avenue is a local road with a low traffic flow and low vehicle speeds. Restricting parking on this section of road will remove the boats and trailers parked in this street. However, it would likely relocate these parked vehicles to neighbouring streets where parking may be less appropriate.

Therefore, it is not recommended to introduce any further parking restriction on Willyama Street.

DISCUSSION

The committee discussed the need for further restrictions in Willyama Avenue.

RECOMMENDATION

Adopted minutes of Manly Local Traffic Committee meeting 11.03.13

It is recommended that Council does not introduce any further parking restriction on Willyama Avenue.



Adopt

Figure 1: request for 12 Hour parking restriction on Willyama Ave, Fairlight

ITEM 16/13 EUSTACE STREET, MANLY – INTRODUCTION OF MOTORBIKE ONLY PARKING SPACES (Item 16/13: 11/3/13)

SUMMARY

For Council to consider introducing a motorcycle parking only bay in Eustace Street.

REPORT

Council has received a request from a resident to introduce some motorbike only parking spaces to the west of Belgrave Street, Manly.

On investigation, a location has been identified on the east side of Eustace Street between West Esplanade and Gilbert Street. A length of parking between 2 driveways on Eustace Street measuring approximately 16m could have a 4m space allocated to motor cycle parking. This space is too short for 3 cars so cars regularly over-hang one of the driveways. Providing a 4m long motorbike parking area would eliminate this issue and provide for motorbike parking.

It is proposed to introduce a 4m long motorbike only parking space on Eustace Street as shown in Figure 1. This space would result in the loss of 1 car parking space. However, the car parked in this space often over hand a driveway and make access for residents difficult.

DISCUSSION

The committee discussed the need of providing motorbike only parking spaces in this area and supported the proposal.

RECOMMENDATION

It is recommended that Council introduce motorbike only parking spaces on the eastern side of Eustace Street, Manly (as shown in Figure 1).



Figure 1. Introduction of motorbike only parking spaces - Eustace Street, Manly

ITEM 17/13 BIRKLEY LANE, MANLY – REQUEST FOR NO PARKING RESTRICTION (Item 17/13: 11/3/13)

SUMMARY

Adopted minutes of Manly Local Traffic Committee meeting 11.03.13

For Council to introduce a No Parking restriction opposite the driveway of house number 34 Parkview Road, located on the back of the house in Birkley Lane.

REPORT

Council has received a request from a resident to introduce No Parking restriction on the western side of Birkley Lane, outside the retirement village.

Trucks are regularly parked on Birkley Lane opposite the garage of number 34 Parkview Road preventing access to the garage of 34 Parkview Road.

The retirement village has off street parking and loading facilities so should not be obstructing access

Birkley Lane is a narrow street with 5m width. When a vehicle, particularly a truck, parks next to the driveway of the retirement village it would be hard to get in and out the driveway. Therefore, it is recommended that a No Parking restriction be introduced opposite the driveway of No.35 Parkview Road in Birkley Lane.

The proposal would result in loss of one parking space; however, the affected residents would be consulted about the proposal.

DISCUSSION

The item was briefly discussed and recommendation agreed.

RECOMMENDATION

It is recommended that Council introduce a No Parking restriction opposite the driveway of house number 34 Parkview Road, in Birkley Lane, Manly, subject to consultation with affected residents.

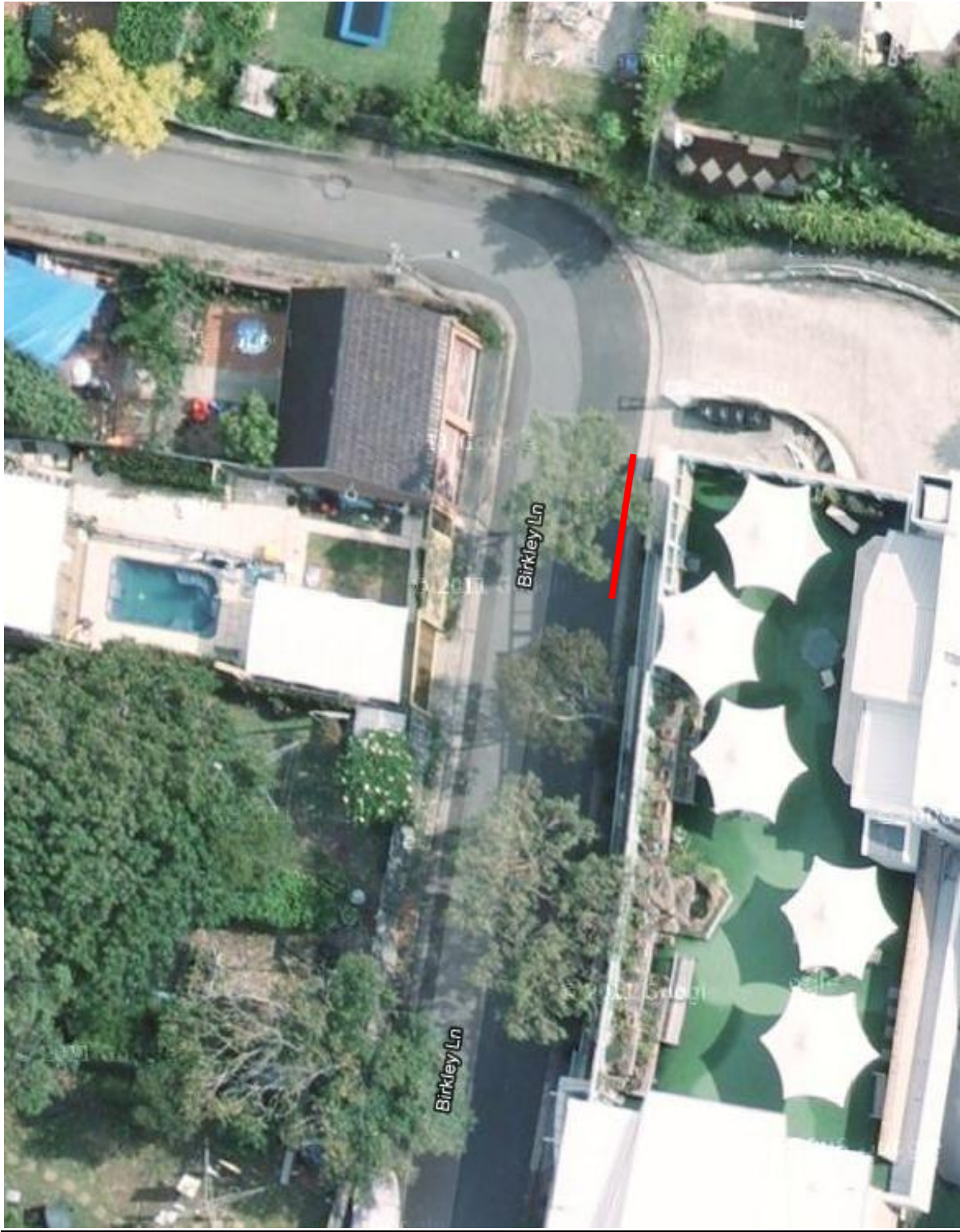


Figure 1: Proposed No Parking restriction, Birkley Lane, Manly

ITEM 18/13 MANLY ANZAC DAYSERVICE TRAFFIC MANAGEMENT PLAN (Item 18/13 : 11/3/13)

SUMMARY

For Council to review and approve the traffic management plan of the annual Manly Anzac Day Service to be held on Thursday 25 April 2013.

REPORT

Council has received a traffic management plan for the planned Manly Anzac Day event to be held by Council.

The services would be similar to previous years including Dawn Service at 4:25am and a Main Service held at the Manly War Memorial outside Chambers commencing at 11am for an estimated one hour.

The organizer has proposed a road closure between 10am and 12:30pm. The road closure has been proposed to apply from the corner intersection of Darley Road and Wentworth Street (The Corso side) to Whistler Street, after the pedestrian crossing outside Council Chambers. Access/Exit to and from Whistler Street Car park will still be maintained via Whistler Street /Sydney road (see Figure 2).

It has also been proposed to apply a No Stopping restriction between 7:00am and 12:30pm on both sides of the designated road closure area.

The Traffic restrictions will allow for the erection of equipment pre the event, appropriate access for the Parade and additional safety for pedestrians walking to and from the Manly Wharf to The Corso Pedestrian Mall.

This road closure will require adequate notice to the public of the proposed closure. The event organizer will arrange for the event to be advertised via the Manly Daily.

Pre-event publicity will also highlight the road closure and advice will be distributed to the Precinct Committees. Notifications will be distributed to local businesses and residents by letterbox drop. Appropriate road signage will be displayed advising of a change in road traffic conditions in Darley road.

DISCUSSION


The committee briefly discussed the traffic management plan for the event and no issues with the proposed traffic management plan were raised. The RMS reminded the Committee that the RMS's traffic management unit needs to be informed of this event.

RECOMMENDATION:

It is recommended that Council approve the Traffic Management Plan and Traffic Control Plan for the Manly Anzac Day Service.



Figure 1. Location of the proposed road closure and no stopping restriction

 Barriers to be placed for No Stopping zones

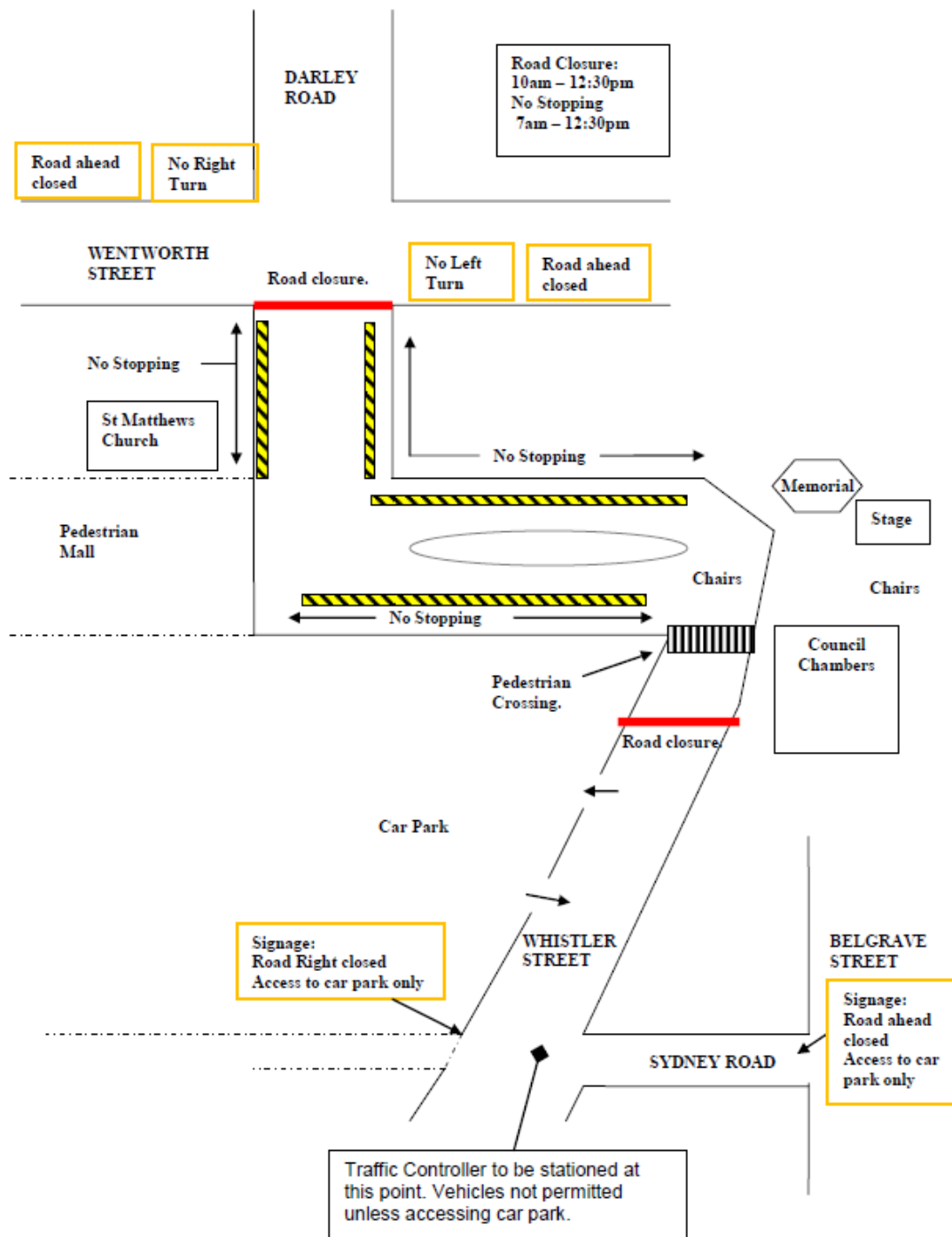


Figure 2. Proposed road closure and no stopping restriction

ITEM 19/13 ARTHUR STREET, IVANHOE PARK – REQUEST FOR PARKING RESTRICTION (Item 19/13: 11/3/13)

SUMMARY

For Council to introducing parking restriction in Arthur Street.

REPORT

Council has received a request from a resident and the Ivanhoe Park Precinct forum for consideration to be given to introducing parking restrictions and to extending the Ivanhoe Park resident permit parking scheme area to include Arthur Street.

Arthur Street is on the edge of the Ivanhoe Park residents permit parking scheme area. This street does experience some additional parking demand as a result of commuters being displaced from the resident's parking scheme. However, parking was observed at various times of day and parking spaces were always available within the street. Parking was also observed at night and at this time very few spaces are available.

The observations of parking in this street suggests that the parking issue in Arthur Street relate to too many local residents wishing to park on street and not to commuter parking so would not be solved by restricting parking.

It is therefore recommended that the parking restrictions on Arthur Street are not changed at this time.

DISCUSSION

The committee discussed the item and agreed with the recommendation.

RECOMMENDATION

It is recommended that Council does not introduce any further parking restriction on Arthur Street.



Figure 1 – Arthur Street, Ivanhoe Park, Manly.

ITEM 5 GENERAL BUSINESS

The following item was raised by a deputation of residents living in the vicinity of Seaview Street / White Street.

A group of residents including the chair of the North Harbour precinct forum spoke to the traffic committee about the road safety issues and traffic problems being experienced at the Seaview Street / White Street intersection and at the Wanganella Street / Upper Beach Street intersection.

At both these roundabouts it is proposed to install roundabouts. These roundabouts have been designed have been approved by the RMS and council for construction.

The deputation raised with the committee several issues about speed of vehicles, use of white street as a rat run and about the lack of pedestrian facilities on Seaview and White Street for pedestrians to cross.

The proposed roundabouts at the Seaview and White Street intersection would provide a crossing on White Street and if needed a crossing on Seaview Street could be installed retrospectively.

It was requested by the residents that a pedestrian and traffic surveys be undertaken before and after the roundabout at Seaview Street is constructed to gauge demand for a pedestrian crossing on Seaview Street and to assess the effectiveness of the roundabout as a traffic calming measure.

The following item was raised by Councillor Alan Le Surf (Chair)

The Committee Chair raised concerns about vehicles using the Bantry Bay reserve car park at night. The police agreed to forward this issue to the Highway Patrol for further investigation.

The following item was raised by Mr O'Connor representative for Mike Baird MP

Mr O'Connor asked that improved enforcement for the T3 Lane / Bus Lane on Manly Road be considered by the RMS / Police. A concern has been raised that the Manly Road Bus Lane/T3 is frequently being used by single occupant drivers. The RMS Representative said that the number of vehicle using this lane legally is very low and RMS is considering changing the lane restriction to a Bus Lane only. .

The following items were raised by John Fortunato, Manly Police

Mr Fortunato asked that the Council reviews the Traffic Management Plan of the Manly Scenic Fun Run event holding on Sunday 19th May 2013. This will be circulated to Committee members via email.

The following item was raised by John Fortunato, Manly Police

Mr Fortunato asked that the Rangers Service be reminded that Hop Skip and Jump bus stop signs do not have a regulatory function and that to be enforceable these signs would need to be used in conjunction with Bus Zone signs.

ITEM 6 MEETING CLOSED AT 11:00 AM

DATE OF NEXT MEETING – 9.30AM, MONDAY 8 APRIL 2013.