

TABLE OF CONTENTS

ITEM 1	WELCOME AND INTRODUCTIONS
ITEM 2	APOLOGIES AND LEAVE OF ABSENCE
ITEM 3	DECLARATIONS OF INTEREST
ITEM 4	REPORTS
ITEM 5	GENERAL BUSINESSES
ITEM 6	NEXT MEETING

ITEM 1 WELCOME AND INTRODUCTIONS

Councillor Alan le Surf opened the Meeting and introduced those present.

ITEM 2 APOLOGIES AND LEAVE OF ABSENCE

None

**ITEM 3 DECLARATIONS OF INTEREST –
PECUNIARY**

None

NON- PECUNIARY

None

ITEM 4 REPORTS

ITEM 54/12 SHERIDAN PLACE, MANLY – CONSIDER CHANGING SHERIDAN PLACE TO A ONE WAY STREET (Item 54/12 : 10/12/12)

SUMMARY

For Council to consider submitting a Traffic Management Plan to the RMS (Roads and Maritime Services) to change Sheridan Place into a one way street.

REPORT

Council has been requested by the Ivanhoe Park Precinct to consider making Sheridan Place a one way street. Currently, the road is used mainly by residents local to the area and they have concerns about road safety particularly close to the bend in the road where it is difficult to see on-coming traffic. (Figures 1 and 2 refer).

Council has investigated the entire length (approximately 215 metres) of Sheridan Place from Augusta Road to Quinton Road in both directions. Although vehicles are usually travelling at lower speeds the lack of sight distance at the bend does pose a potential risk of cars colliding. The proposal of a one way system, entering at Augusta Road and exiting at Quinton Road, would remove this risk (Figure 3). If the street were to change to one way, parking could remain the same and cars would all flow in the same direction without the risk of a collision at the bend.

There have been no reported injury accidents in this street. The disadvantages of a one way system include increased journey times and reduced accessibility. Therefore a compelling reason for introducing such a system would be required. Because traffic volumes and vehicle speeds on this road are low and the road has no reported accidents, the need for a one way system is questionable.

DISCUSSION

The committee discussed this item. The roads and Maritime representative recommended that a convex mirror would be an appropriate solution. Given the low traffic volumes and vehicles speeds this was agreed by the committee.

RECOMMENDATION

It is recommended that Council:

- Do not progress a proposal for a one way system on Sheridan Place.
- Install a convex mirror at the end of Sheridan Place.



Figure 1: View when travelling in an easterly direction.



Figure 2: View when travelling north on Sheridan Place.



Figure 3: Proposed one way direction for Sheridan Place – entering at Augusta Road and exiting at Quinton Road.

ITEM 55/12 ASHLEY PARADE, FAIRLIGHT – PROPOSED NO PARKING RESTRICTIONS (Item 55/12: 10/12/12)

SUMMARY

For Council to consider introducing parking restrictions on the eastern side of Ashley Parade, Fairlight, between Fairlight Street and Hilltop Crescent.

REPORT

Council has received requests from residents asking that council considers a “No Parking” restriction on the eastern side of Ashley Parade.

Residents have complained that it is difficult to exit driveways and to drive along Ashley Parade with vehicles parked in the street. Ashley Parade is a narrow street approximately 5m wide this gives insufficient width for parking on both sides of the street. Until recently residents have parked considerately allowing parking on both sides of the street and leaving sufficient space for vehicles to pass. However, the east side of the street is now regularly being used to park a large truck which does not park considerately.

It is proposed to install marked parking bays and signs in this street to show where it is acceptable to park and to introduce No parking opposite the garage entrances within this street.

Introducing the No Parking restriction on the eastern side of Ashley Parade would result in the loss of approximately 2 parking spaces. The parking within marked bays would remove the inappropriate parking by the truck.

DISCUSSION

The item was briefly discussed and it was agreed that the the item should be implemented subject to consultation.

RECOMMENDATION

It is recommended that Council implement a No Parking restriction and parking within marked bays restriction on Ashley Parade subject to consultation with affected residents.



Figure 1 Proposed “No Parking” and park within marked bay restrictions – Ashley Parade, Fairlight

ITEM 56/12 BALGOWLAH HEIGHTS PUBLIC SCHOOL - PROPOSED CHANGES TO PARKING RESTRICTIONS (Item 56/12: 10/12/12)

SUMMARY

For Council to consider changes to the existing parking restrictions in the vicinity of Balgowlah Heights Public School in Radio Avenue and Lewis Street.

REPORT

Council have been requested to consider improving the existing parking restrictions in the vicinity Balgowlah Heights Public School.

It has been requested that Council alleviate the traffic conditions outside the school by improving the parking restrictions in Radio Avenue and Lewis Street. The proposed improvements include:

Lewis Street

- The existing pick-up and drop-off zone located on the eastern side of Lewis Street to be relocated to the western side of the street, commencing from the existing No Stopping sign adjacent to the pedestrian crossing.

Radio Avenue

- The existing pick-up and drop-off zone on the western side of Radio Avenue to be extended to the existing No Stopping sign.
- The existing “No Stopping 8am- 9:30am, 2:30pm-4pm Monday- Friday” restrictions located to the south of the pedestrian crossing, on the western side of Radio Avenue, are extended to the intersection of Abbott Street.

There is an existing pick-up and drop-off zone on either side of Lewis Street outside the school, which sometimes cause the queues on both sides, when parents /carers are looking for a space to pick-up/ drop-off their children. Relocating the existing pick-up and drop-off zone from eastern side to the western side of Lewis Street would result in having a pick-up and drop-off zone just along one side of Lewis Street. It would reduce the traffic issues that result from picking-up and dropping-off children on both sides of the street (refer to Figure 1).

Therefore, it is recommended that the existing “No Parking 8am-9:30am, 2:30pm-4pm Mon- Fri” be relocated to the unrestricted area, between the existing No Stopping and No Parking zone on the western side of Lewis Street. This would cause the loss of 2 car spaces, but would improve the traffic conditions outside the school.

Radio Avenue is a two-way street with a width of about 6.3m. As shown on the Figure 2, there are existing “No Stopping 8am- 9:30am & 2:30pm-4pm Mon-Fri” restrictions on both sides of the children’s patrolled crossing, however the rest of street to Abbot Street is unrestricted on the both sides. There is a high traffic flow in Radio Avenue during school pick-up and drop-off hours. Cars parking on both sides make it hard for cars to drive through the street.

Therefore, it is recommended that the existing “No Stopping 8am- 9:30am, 2:30pm-4pm Mon-Fri” on the western side of Radio Avenue, be extended to the intersection of Abbot Street. This would cause the loss of 5 parking spaces, however, this restriction would be applied only during school hours.

Extending the pick-up and drop-off zone to the south to the existing No Stopping sign will result in the loss of about 2 car spaces during school hours. However, it would provide more pick-up / drop-off spaces outside the school, and improve the traffic conditions outside the school.

The recommendations have been discussed and agreed with the principal of the Balgowlah Heights Public school.

DISCUSSION

The committee discussed the need for these parking restrictions and agreed to recommend implementation of changes to parking restrictions subject to consultation. The need for enforcement of these restrictions was identified by the committee.

RECOMMENDATION

It is recommended by Council that:

- The existing “No Parking 8am-9:30am. 2:39pm-4pm Mon-Fri” restriction on the eastern side of Lewis Street is relocated to the unrestricted area, between the existing No Stopping and No Parking zone on the western side.
- The existing “No Stopping 8am- 9:30am, 2:30pm-4pm Mon-Fri” on the western side of Radio Avenue, be extended to the intersection of Abbot Street.
- The existing “No Parking 8am-9:30am. 2:39pm-4pm Mon-Fri” restriction on the western side of Radio Avenue be extended to the south to the existing No Stopping sign.
- The above changes are implemented subject to consultation with affected residents.



Figure 1: Proposed improvements in parking restrictions – Lewis Street, Balgowlah Heights



Figure 2: Proposed improvements in parking restrictions - Radio Avenue, Balgowlah Heights

ITEM 57 /12 MANLY CLUB FOR SENIORS, BALGOWLAH – PROPOSED 4 HOUR PARKING RESTRICTION (Item 57 /12: 10/12/12)

SUMMARY:

For Council to consider introducing a “4 Hour Parking 8am-5pm Monday – Friday” restriction on the western side of Balgowlah Road.

REPORT

Council has received a request from the Seniors Centre to introduce a 4 Hour Parking restriction along the west side of Balgowlah Road (refer to Figure 1).

Users of the Seniors Centre find it difficult to find suitable parking close to the centre and the centre car park is often full for the majority of the day. Parking on the west side of Balgowlah Road is predominantly used by commuters and for the long term storage of trailers.

The introduction of a “4 hour parking 8am-5pm Monday–Friday” restriction as shown on Figure 1, will prevent the parking spaces being used all day, and will provide some availability of spaces for the Seniors Club’s Customers.

DISCUSSION

The committee discussed the need for the proposed restrictions. It was identified that some parking on the west side of Balgowlah Road is used by residents and staff of Harris Farm Market. It was suggested that some spaces should remain unrestricted on the west side of the street and that spaces on the east side of the street should also be restricted to 4 hours (currently spaces on the east side of Balgowlah Road are restricted to 2 hours , except for resident permit holders of the Ocean Beach area.

RECOMMENDATION

It is recommended that Council:

- Implement a 4 hour parking 8am-5pm Monday to Friday restriction on the western side of Balgowlah Road for a distance of approximately 60m (approximately 10 car spaces).
- Request that amending the parking restriction on the west side of Balgowlah Road between the intersection with Pittwater Road and the intersection with Golf Parade be investigated and reported back to the traffic committee.

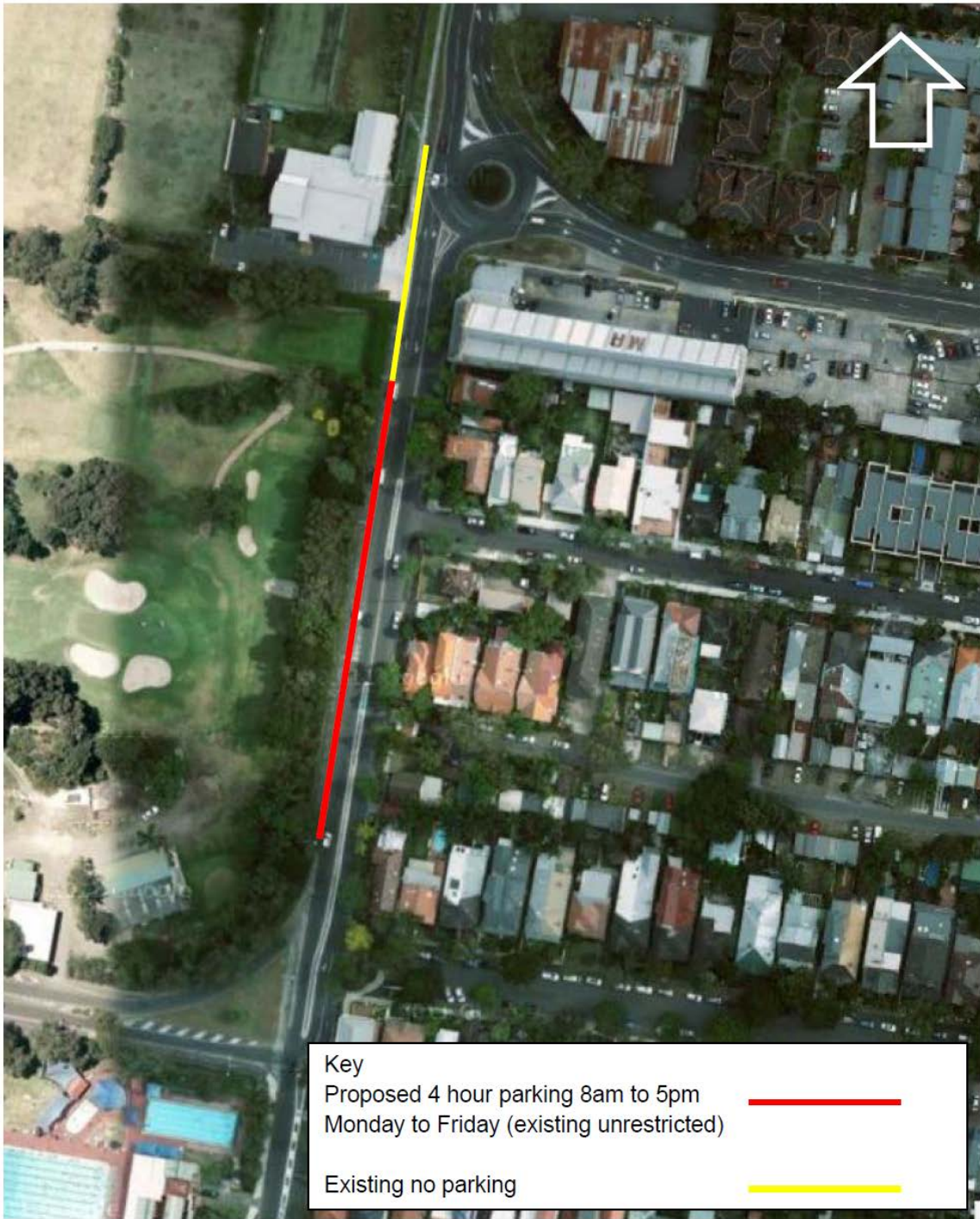


Figure 1: implementation of parking restrictions – Balgowlah road, Balgowlah

ITEM 58/12 NORTH STEYNE - SYDNEY MORNING HERALD SUN RUN 2013 TRAFFIC MANAGEMENT PLAN (Item 58/12 : 10/12/12)

SUMMARY

Council has received a traffic management plan and traffic control plans for the planned Sydney Morning Herald Sun Run 2013.

The proposed race route is a 6km Course which begins from The Strand between Dee Why Parade and Howard Avenue in Dee Why and finishes at the intersection of Darley Road and Ashburner Street (see Figure.1)

REPORT

The traffic team has reviewed the traffic management plan and traffic control plans provided by Fairfax Events.

The race is due to take place on Saturday 2nd February 2013. Approximately 1.9km of the proposed 6km race course falls within Manly's LGA. The section falling within Manly's LGA runs from Bridge Road along North Steyne, South Steyne and Ashburner Street to its intersection with Darley Road.

This was the proposed route in 2011 and 2012 however, due to a delay to sewer works on Darley Road, Council requested that the race finish at Raglan St. This was to ensure vehicles could get out of North Head.

The organisers have now requested that as works are completed on Darley Road that the route is extended back to its originally proposed finishing point at the intersection of Darley Road and Ashburner Street (see Figure 2).

DISCUSSION

The item was discussed by the committee. The RMS reminded the committee that the RMS traffic management unit would need to be informed about the proposed event.

RECOMMENDATION:

It is recommended that Council approve the Traffic Management Plan and Traffic Control Plans for the sun run.

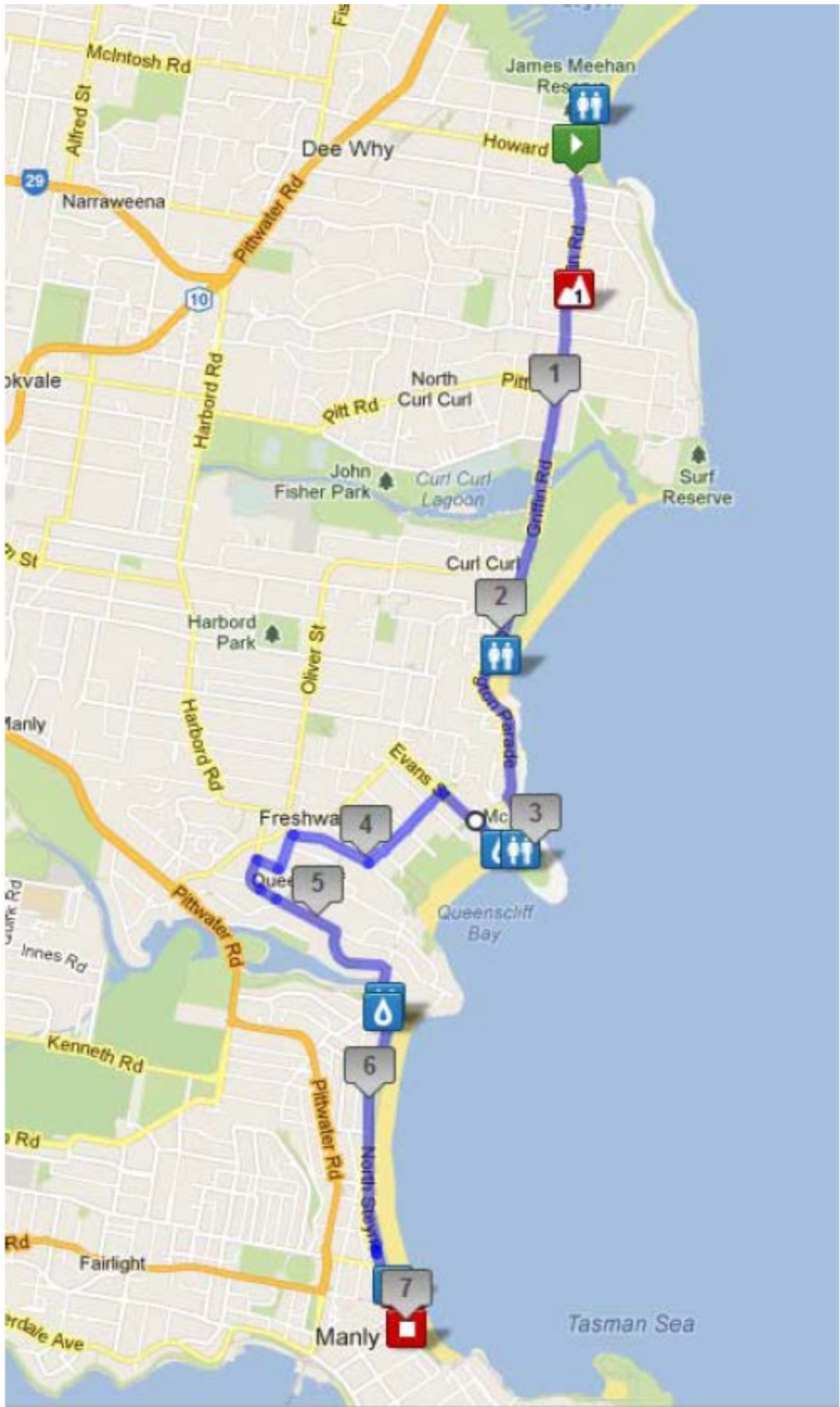


Figure 1. Race Route



Figure 2. Previous & Proposed Finishing Points

ITEM 5 GENERAL BUSINESSES

State Transit Authority

1. West Esplanade – Bus Parking

The STA representative raised the issues on West Esplanade with tourist coaches parking in spaces reserved for STA scheduled bus services. It was requested that the parking signs be amended to include “STA authorised vehicles only”.

2. Bus stop sign being obscured at the Emporium Pittwater Road

The STA also raised concern that the awning of “the emporium” on Pittwater Road close to Collingwood Street obscures the bus stop sign. The Traffic Manager agreed to raise the issue with Council’s compliance team.

ITEM 6 NEXT MEETING

The next meeting is scheduled for the 14 February 2013 at 9:30am in the Councillors Room, Manly Council Town Hall.