



**MINUTES OF MEETING
MANLY TRAFFIC COMMITTEE
HELD MONDAY, 15 JUNE 2015**

Note: All minutes are subject to confirmation at a subsequent Council of Planning and Strategy Committee Meeting.

PRESENT:

Councillors

Councillor Alan Le Surf	Manly Council (Chair)
Councillor Hugh Burns	Manly Council

Other Members

Mr John O'Connor	Representative for Mr Mike Baird MP Member for Manly
Mr Alex Coates	Roads and Maritime Services
Mr Wade Mitford	State Transit Authority
Sgt Nino Jelovic	Manly Police

Council Staff

Ben Hubbard	Manager Traffic & Transport – Civic & Urban Services
Ms Jessica Szeto	Traffic Officer – Civic & Urban Services

Apologies

Mayor Jean Hay	Manly Council
----------------	---------------

TO THE MAYOR AND COUNCILLORS OF THE COUNCIL

The **Manly Traffic Committee** met on the 15 June 2015 to consider the matters referred to and reports having reached the decisions taken and recommendations stated hereunder.



ITEM 1 WELCOME AND INTRODUCTIONS

Councillor Alan Le Surf welcomed the Traffic Committee.

ITEM 2 APOLOGIES AND LEAVE OF ABSENCE

The Mayor Jean Hay sent her apologies.

ITEM 3 DECLARATIONS OF INTEREST: PECUNIARY NON-PECUNIARY

No pecuniary or none-pecuniary interests declared except where noted in the minutes.

ITEM 4 REPORTS

ITEM 25/15 EAST ESPLANADE, MANLY – IMPLEMENTATION OF PEDESTRIAN CROSSING NEAR VICTORIA PARADE (ITEM 25/15: 11/05/15)

SUMMARY

For Council to consider installing a pedestrian crossing at East Esplanade, north of Victoria Parade, Manly.

REPORT

Council has received requests to investigate the possibility of installing a pedestrian crossing on East Esplanade, north of the intersection with Victoria Parade, as shown in Figure 1. At this location, there is currently a pedestrian refuge.

The installation of a pedestrian crossing would provide pedestrians with right of way at the crossing, and not drivers which is the current situation with the refuge in place.

Pedestrian crossing warrants

The following warrants apply for the installation of a pedestrian crossing (RTA Manual of Uniform Traffic Control Devices (AS-1742)):

- The product of measured pedestrian flow per hour (P) and the measured vehicle traffic flow per hour (V) is equal to or greater than 60,000;
- The measured hourly pedestrian (P) and vehicle (V) flows are greater than 30 and 500 respectively; and
- The measured flows apply for the three periods of one hour in any day.

Traffic flows at the East Esplanade / Victoria Parade intersection

A summary of the two way vehicle flows on East Esplanade (north and southbound, north of Victoria Parade) and pedestrian flows (east and westbound at the existing refuge across East Esplanade) is shown in Table 1. The data is based on the three peak hours for vehicle flows on Tuesday 3 February 2015.

Table 1: Pedestrian and vehicle flows at East Esplanade north of Victoria Parade

Time of day (peak hour traffic flows)	Two way flows at refuge		V * P	Meets warrant for zebra crossing
	Vehicles (V) (NB and SB on East Esplanade)	Pedestrian (P) (EB and WB across East Esplanade)		
8.15am - 9.15am	953	175	166,775	Yes
3.45pm - 4.45pm	826	82	67,732	Yes
4.45pm - 5.45pm	944	128	120,832	Yes

Source: R.O.A.R. data (February 2015)

As seen in Table 1, the warrants for three separate hours in one day are met for a pedestrian crossing to be installed where the existing pedestrian refuge is.

It is unusual for a pedestrian crossing to be installed in combination with a pedestrian refuge because it may result in confusion as to who (the driver or the pedestrian) has got right of way. Should the installation of a pedestrian crossing proceed, it is therefore proposed that the refuge be removed at the same time.

DISCUSSION

The Committee raised no objections and agreed with the proposal.

RECOMMENDATION

That Council installs a pedestrian crossing, north of the East Esplanade / Victoria Parade intersection, across East Esplanade, Manly.

ANNEXURES



Figure 1: Proposed location of pedestrian crossing at East Esplanade north of Victoria Parade

ITEM 26/15 - SUWARROW STREET, FAIRLIGHT – CHANGES TO PARKING RESTRICTIONS (ITEM 26/15: 15/06/15)

SUMMARY

For Council to consider extending the No Stopping Zone on the western side of Suwarrow Street, north of Griffiths Street, Fairlight.

REPORT

Concerns have been raised by residents that the Suwarrow Street approach to the Griffiths Street intersection is narrow and vehicles often have to either stop or reverse on the corner when turning in from Griffiths Street if there are vehicles traveling in opposite directions.

Similar concerns have previously been raised by the drivers of Council's Hop Skip and Jump bus service with regards to the narrowness of this corner.

The width of Suwarrow Street at the intersection is approximately 7m, which is significantly reduced with two cars parked on each side of the road. To improve safety and manoeuvrability along this section, it is proposed to extend the existing No Stopping Zone on western side of Suwarrow Street an additional 8m north, as shown in Figure 1. This would result in the removal of one (1) on-street parking space.

DISCUSSION

The Committee discussed the proposal and agreed that the proposal will be subject to consultation with the Fairlight Precinct Community Forum and the affected residents.

RECOMMENDATION

That Council extends the No Stopping Zone on the western side of Suwarrow Street, north of Griffiths Street, Fairlight, an additional 8m north, subject to consultation with the Fairlight Precinct Community Forum and the affected residents.

ANNEXURES

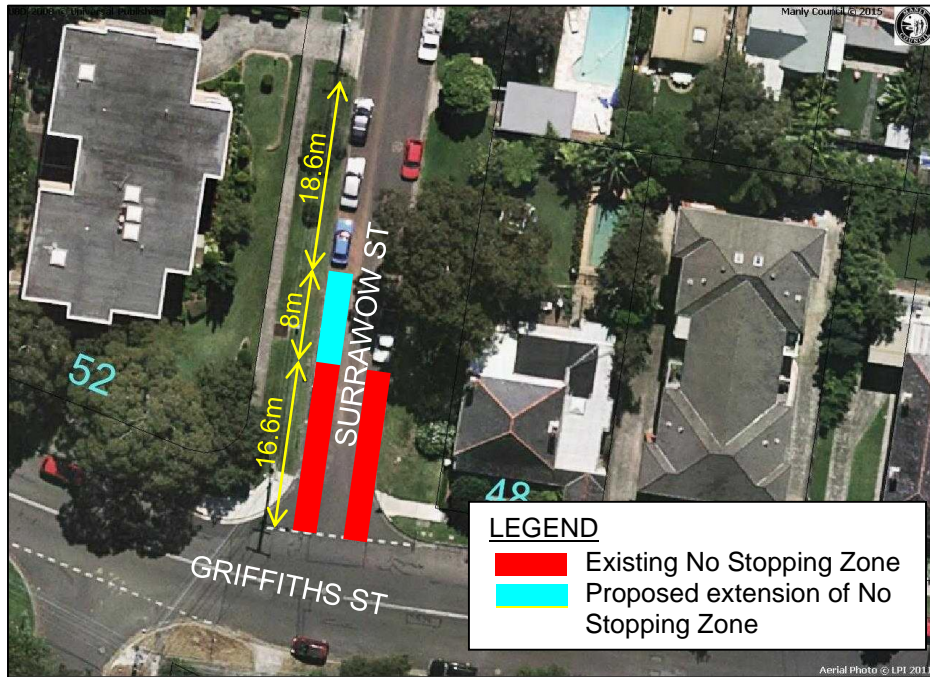


Figure 1: Proposed extension of the No Stopping Zone along the western side of Suwarrow Street, Fairlight

ITEM 27/15 **GRIFFIN STREET, MANLY – CHANGES TO PARKING ARRANGEMENTS**
(ITEM 27/15: 15/06/15)

SUMMARY

For Council to consider changing the parking arrangements on Griffin Street, Manly.

REPORT

Council has received a request from residents of Griffin Street to consider formalising the parking restrictions along the frontage of No.2 Griffin Street, Manly, from one (1) parallel parking space into two (2) angle parking spaces.

Council has been advised that vehicles are currently informally parked in an angle (as seen in Figure 1) and are frequently being booked for not parking parallel to the kerb. It is proposed to formalise angle parking bays by line marking two (2) angle parking spaces, as shown on Figure 2.

Changing the parking restrictions to formalised angle parking would provide one (1) additional parking space in an area where parking is in high demand and would also stop vehicles from hanging over into the No Stopping Zone, which could be the case if two vehicles are parked parallel to the kerb behind each other, since there is insufficient space for this.

To increase parking in the area and formalise the angle parking, it is proposed to line mark two (2) angle parking spaces as shown on Figure 2. The width of the area between the No Stopping sign and the kerb is 5m, so two (2) angle parking spaces would fit in accordance with the AS2890.5 On-street parking.

DISCUSSION

The Committee raised no objections to the proposal but agreed that 'Parked in Marked Bays' signage should be implemented in conjunction with the marked bays.

RECOMMENDATION

That Council formalises the angle parking along the frontage of No.2 Griffin Street, Manly, by line marking two (2) angle parking bays and 'Parked in Marked Bays' signage.

ANNEXURES



Figure 1: Cars currently parked at an angle along the frontage of No.2 Griffin Street

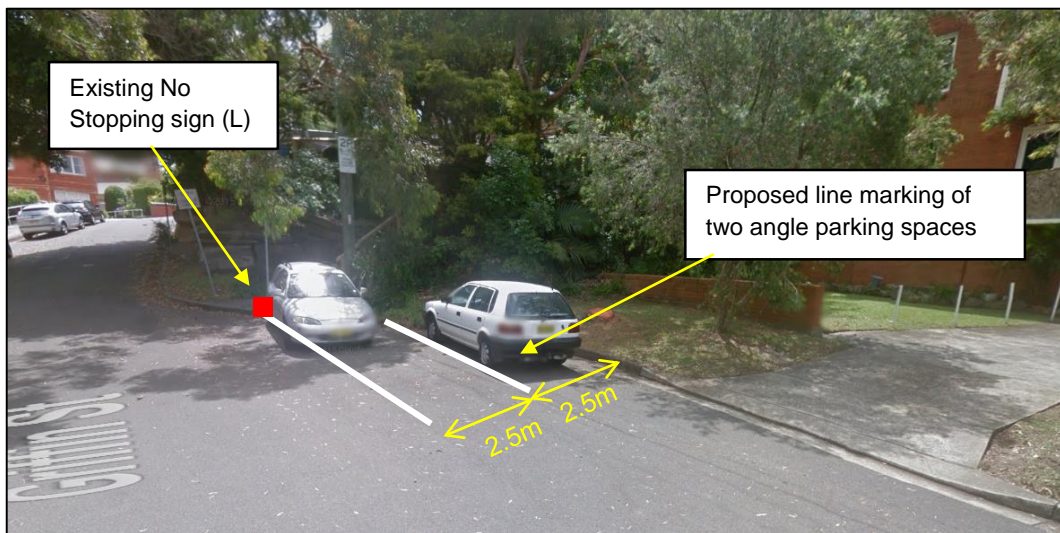


Figure 2: Proposed line marking of two angle parking bays outside 11 Griffin Street, Manly

ITEM 28/15 **ROSEBERRY STREET, BALGOWLAH – CHANGES TO PARKING RESTRICTIONS (ITEM 28/15: 15/06/15)**

SUMMARY

For Council to consider removing two (2) parallel parking spaces on the eastern side of Roseberry Street, along the frontage of No.28-34 Roseberry Street, Balgowlah.

REPORT

Concerns have been raised by staff and clients of a warehouse along No.28-34 Roseberry Street, Balgowlah, that visibility when exiting the warehouse is frequently obstructed by vehicles parked north of the driveway. This is making it difficult for drivers to safely exit the warehouse onto Roseberry Street.

Council has been advised that the issue has been created because the completion of the new Woolworths and Bunnings stores on the western side of Roseberry Street has put more pressure on parking on the eastern side of the road.

To improve the situation and visibility north of the driveway it is proposed to implement No Parking along the section of road between the entry and exit driveways to the warehouse, as shown on Figure 1. This would result in the removal of two on street parking spaces.

DISCUSSION

The Committee discussed the issues of parking needs in the area and concluded that there was sufficient off-street parking spaces available for the public. Concerns were raised regarding setting precedence with the proposal, but it was concluded that the No Parking Zone should be installed given that this section of the road is mainly for industrial use. It was agreed that the No Parking Zone should be restricted between the hours of 8am to 5pm; Monday to Friday, to accommodate for business hours and subsequently, increase parking amenities outside of these hours.

RECOMMENDATION

That Council removes two (2) parallel parking spaces on the eastern side of Roseberry Street, along No.28-34 Roseberry Street, Balgowlah, by implementing a No Parking Zone between 8am to 5pm, Monday to Friday.

ANNEXURES



Figure 1: Proposed implementation of No Parking restrictions outside 28-34 Roseberry Street, Balgowlah

ITEM 29/15 **FROMELLES AVENUE, SEAFORTH – CHANGES TO PARKING RESTRICTIONS (ITEM 29/15: 15/06/15)**

SUMMARY

For Council to consider installing parking restrictions along the frontage of No.25-27 Fromelles Avenue, Seaforth, for the Jacaranda Preschool.

REPORT

Council has received a request to install a five (5) minute drop off / pick up area during school hours, between 8am-9am and 3pm-4pm Mon-Fri, along the frontage of No.25-27 Fromelles Avenue for the Jacaranda Preschool.

The width of the street is 7.1m, where there is currently unrestricted parking along both sides of the street.

A site investigation undertaken revealed that parking is well-utilised along this section of the road, with limited on-street parking spaces available. There is off-street parking available for all properties along this street and as such, the proposal will have little impact on existing parking amenities for the residents.

The proposal will assist provide a higher turnover rate of parking for parents and patrons of the Jacaranda Preschool during peak drop off / pick up times. In addition, the proposal will also allow parents to park closer to the preschool facility to drop off and/or pick up their children. The proposed length of the 5 minute Zone is 19.8m, which will accommodate for three (3) vehicles and is shown in Figure 1, below.

DISCUSSION

The Committee raised no objections and agreed that the proposal will be subject to consultation with the affected resident. It was noted that the provision of appropriate drop off and pick up areas must be considered for future DA proposals of childcare facilities and/or similar.

RECOMMENDATION

That Council install a five (5) minute Zone during school hours, between 8am-9am; 3pm-4pm; Mon-Fri, along the frontage of No.25-27 Fromelles Avenue, Seaforth, subject to consultation with the affected resident.

ANNEXURES



Figure 1: Proposed installation of a 5 minute drop off / pick up area during school hours for the Jacaranda Preschool

ITEM 30/15 **THE CRESCENT, MANLY – INSTALLATION OF MOTOR BIKE
PARKING (ITEM 30/15: 15/06/15)**

SUMMARY

For Council to consider installing Motorbike Parking along The Crescent, between West Esplanade and Commonwealth Parade, Manly.

REPORT

Council has received a request to install Motorbike Parking along The Crescent, between West Esplanade and Commonwealth Parade.

Concerns have been raised by a resident regarding the excessive number of motorcycles regularly parking along this road, which has negatively affected parking amenities for vehicles as parking in the area is in high demand.

The Crescent functions as a One Way road with 2P short-term parking available along both sides. There is currently limited formalised motorbike parking available, where it was observed that a majority of motorbikes have been parking along the western end of The Crescent.

A site investigation undertaken revealed that motorbike parking exceed the current supply and as such, the provision of additional motorbike parking areas will assist formalise parking in the area to maximise the available parking capacity in accordance with AS2890.5 On-street parking.

The proposed re-configuration of parking is displayed in Figure 1, below.

There are currently four (4) formalised motorbike parking spaces available along The Crescent. The proposal will provide an additional five (5) motorbike spaces, without removing any available parking spaces for vehicles in accordance with Australian Standards, as shown in Figures 2, 3 and 4.

Should the proposal be installed, this will provide a total of nine (9) motorbike parking spaces along The Crescent.

The proposal is the preferred option as any removal of parking for vehicles along this road may negatively impact the surrounding roads. Further, the proposal will also assist formalise parking in the area into their distinctive zones in order to maximise available parking space and accommodate the parking needs of motorbikes and vehicles.

DISCUSSION

The Committee raised no objections and agreed that the proposal would assist provide greater parking amenities for motorbikes.

RECOMMENDATION

That Council installs formalised motorbike parking areas for a total of five (5) motorbike spaces along the frontage of No.22 and No.31-33 The Crescent, Manly.

ANNEXURES

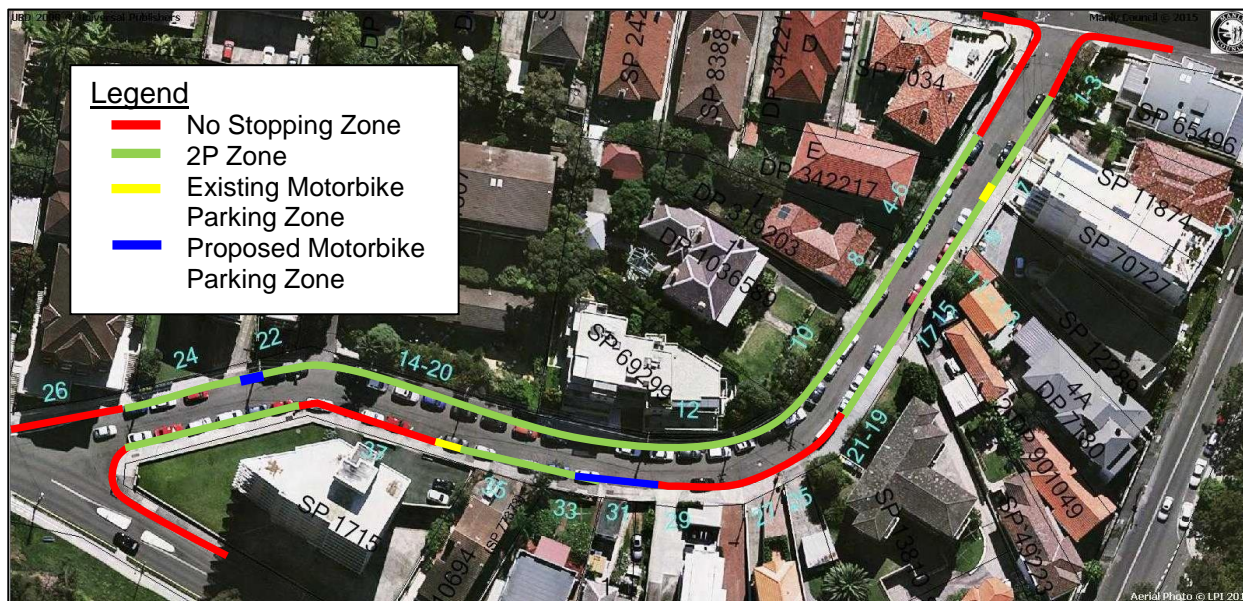


Figure 1: The Crescent, Manly – Proposed installation of Motorbike Parking



Figure 2: Frontage of No.22 The Crescent, Manly – Proposed installation of Motorbike Parking for two (2) spaces



Figure 3: Frontage of No.33 The Crescent, Manly – Proposed installation of Motorbike Parking for two (2) spaces



Figure 4: Frontage of No.31 The Crescent, Manly – Proposed installation of Motorbike Parking for one (1) space

ITEM 31/15 **TRAFFIC MANAGEMENT PLAN – CELEBRATING 100 YEARS OF WOMEN IN POLICING (ITEM 31/15: 15/06/2015)**

SUMMARY

For Council to approve the traffic management plan of the Celebrating 100 Years of Women in Policing event held on Friday, 17 July 2015.

REPORT

Council has received a traffic management plan for the planned ‘*Operation Baltimore – Celebrating 100 Years of Women in Policing*’ event to be held by the Northern Beaches LAC, on Friday, 17 July 2015, from 10am to 1pm.

The planned route will commence at Dee Why Beach and will transverse the coastline south to The Corso Manly, as shown in Figure 1, below.

Within the Manly LGA, the baton relay will travel north of the Queenscliff Surf Life Saving Club and move to the Pedestrian Promenade of Manly Beach, where it will travel south past the front of the Queenscliff Surf Life Saving Club and continue south to The Corso, Manly. The baton relay will finish at the intersection of The Corso, Manly, and the pedestrian promenade where further community celebrations will take place.

It is expected that there will be minimal delays expected and general information signs will be installed one to two weeks prior to the event, notifying road users of the impending event and the resulting changed traffic conditions.

Consultation with the affected residents and businesses will be undertaken with a minimum of seven (7) days’ notice. Alternative routes will also be outlined in the local media.

DISCUSSION

The Committee raised no objections to the proposal and approved the TMP.

RECOMMENDATION

That Council approves the Traffic Management Plan for the Celebrating 100 Years of Women in Policing Event held on Friday, 17 July 2015.

ANNEXURES

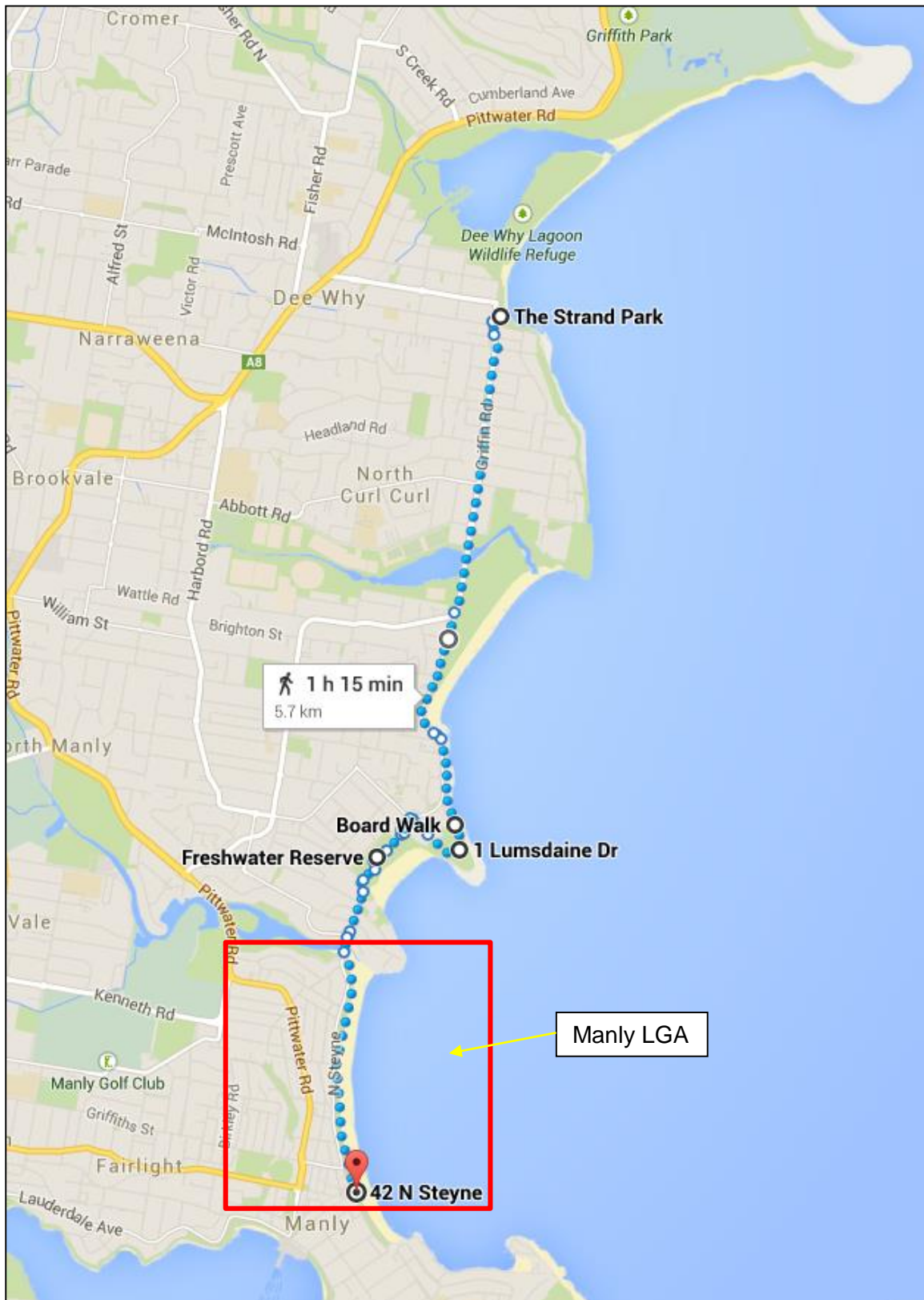


Figure 1: Traffic Management Plan – Route

ITEM 32/15 **RAGLAN STREET, MANLY – PEDESTRIAN CROSSING (ITEM 32/15: 15/06/2015)**

SUMMARY

For Council to approve the implementation of a pedestrian crossing on Raglan Street, between Short Street and Central Avenue.

REPORT

Council has received requests from the parish, local businesses and residents that a pedestrian crossing be installed mid-block between Short Street and Central Avenue.

Pedestrian crossing warrants

The following warrants apply for the installation of a pedestrian crossing (RMS supplement to the Australian/ New Zealand Standards Manual of Uniform Traffic Control Devices (AS-1742)):

- The product of the measured pedestrian flow per hour (P) and the measured vehicle traffic flow per hour (V) is equal to or greater than 60,000;
- The measured hourly pedestrian (P) and vehicle (V) flows are greater than 30 and 500 respectively; and
- The measured flows apply for the three periods of one hour in any day.
- A special warrant, for certain circumstances, can be applied. This requires the same minimum hourly flows but accepts a reduced value for PV greater than 45,000

Traffic flows on Raglan Street

A summary of the vehicle and pedestrian flows on Raglan Street close to the Raglan Street / Whistler Street intersection are shown in Table 1. The data is based on the three peak hours for vehicle flows on Friday 27 June 2014.

Table 1: Pedestrian and vehicle flows – Raglan Street

Time of day (peak hour traffic flows)	Two way flows at refuge		V * P	Meets warrant for zebra crossing
	Vehicles (V) (West of Whistler Street)	Pedestrian (P) (West of Whistler Street)		
08:15am – 09:15am	742	102	75684	Yes
10:15am – 11:15am	579	43	24897	No
12:45pm – 13:45pm	605	40	24200	No

Source: SkyHigh data (June 2014)

As seen in Table 1, the warrants for three separate hours in one day are not met. However, it is anticipated that the upgraded streetscape in Raglan Street and the neighbouring lane ways will attract increased numbers of pedestrians. Also the results were collected for a typical weekday and do not reflect the high volume of pedestrians that cross Raglan Street on a Sunday, particularly on special occasions.

DISCUSSION

The Committee discussed the proposal. The RMS said that they could not support the scheme as the crossing warrants have not being met in this instance. The Chair and the Police representative supported the proposal. The representative of Mike Baird's Office said he would need to confirm Mike Baird's view but that he was supportive of the proposal.

Subsequent to the meeting, Council Officers contacted the RMS and provided further information from the Parish Church and School demonstrating the need for the proposed pedestrian crossing. Following from this additional information, the RMS agreed that they have no objection to the proposed scheme.

RECOMMENDATION

That Council install a pedestrian crossing along Raglan Street, between Short Street and Central Avenue, Manly.

ITEM 33/15 **BALGOWLAH ROAD, MANLY – 4P 8AM TO 6PM MONDAY TO FRIDAY
RESTRICTION (ITEM 33/15: 15/06/2015)**

SUMMARY

For Council to approve the installation of a 4 hour (4P) 8am and 5pm Monday to Friday parking restriction between Kenneth Road and the existing 4 hour parking restriction on the west side of Balgowlah Road, Manly.

REPORT

A section of the west side of Balgowlah Road between Kenneth Road and approximately 50m south of Rolfe Street is currently unrestricted and is being used for long term parking and storage of vehicles including trailers. To increase the turnover of parking at this location it is proposed to introduce 4P parking 8am to 5pm Monday to Friday (refer to Figure 1).

The impact of this proposal will likely be the displacement of long stay parking to other parts of Kenneth Road and Balgowlah Roads. However, parking in this part of Balgowlah Road is at a premium as it serves the swim centre, the seniors centre and Kerlie Park. The parking hours 8am to 5pm are consistent with the existing restriction on this side of the street and allow for use over night by local residents.

DISCUSSION

The Committee discussed the parking needs in the area and agreed that the proposal would result in a higher turnover of parking, which would be of benefit to the local businesses in the area. It was agreed that the proposal would be subject to consultation with the affected properties.

RECOMMENDATION

Council implement a 4P parking restriction for the currently unrestricted section of Balgowlah Road, Manly, subject to consultation with affected properties.

ANNEXURES



Figure 1: Proposed 4P parking restriction Balgowlah Road, Manly

ITEM 34/15 **CENTRAL AVENUE, MANLY – LOADING ZONE (ITEM 34/15:
15/06/2015)**

SUMMARY

For Council to approve the installation of a 15 minute Loading Zone at the northern end of Central Avenue, Manly.

REPORT

A concern of businesses on Raglan Street is that the Raglan Street upgrade removes all parking from the street and so there is no facility for Loading and unloading. To provide for loading and unloading it is proposed to introduce a 10m Loading Bay on the west side of Central Avenue to the south of the access to the 'Allegra' building (refer to Figure 1).

Implementing this restriction will remove two (2) parking spaces. However, the police parking at the southern end of Central Avenue has recently been converted to ½ hour parking giving a net increase of four (4) parking spaces within the street.

DISCUSSION

The Committee raised no objections and agreed with the proposal, subject to the consultation with the affected properties.

RECOMMENDATION

That Council implement a 15 minutes Loading Zone on the west side of Central Avenue, Manly, approximately 20m south of Raglan Street, subject to consultation with affected properties.

ANNEXURES

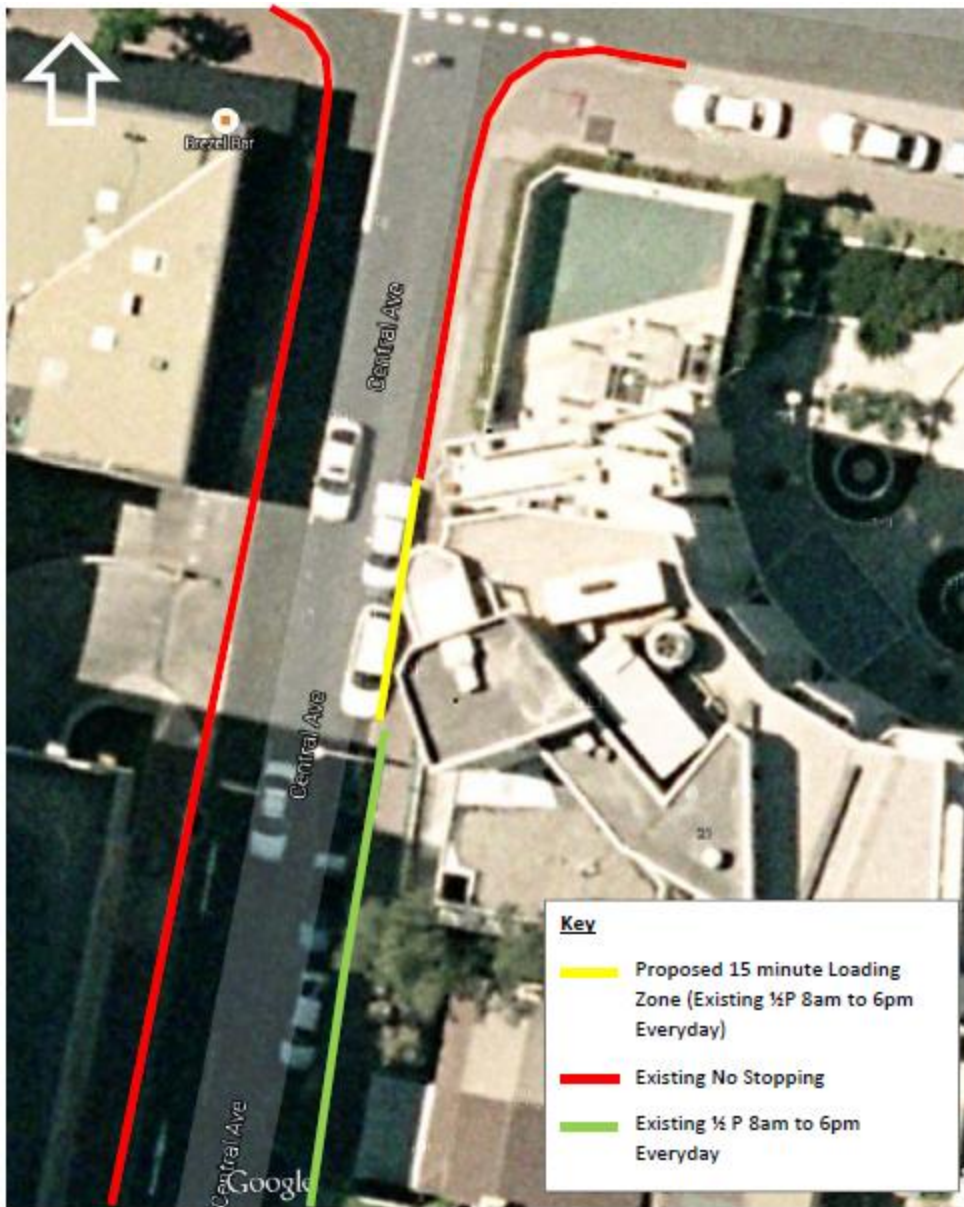


Figure 1: Proposed Loading Zone Central Avenue

ITEM 5 GENERAL BUSINESS

1. The Access Committee have advised their preference for timed parking restrictions over No Parking Zones for drop off / pick up purposes. The Committee agreed that a 15 minute parking Zone shall be installed along Totem Lane, Balgowlah (MLTC April 2015, Item 19/15).
2. The traffic along Judith Street, Seaforth, is to be reviewed again in 12 months' time to gauge the volume of vehicles as a result of the new Northern Beaches Hospital at Frenches Forest.
3. The 135 bus service terminus at North Head was discussed and concluded that STA was to review the issue.
4. Councillor Burns raised that as part of the Manly2015 Master plan, the two-way conversion of Whistler St, Manly, should be undertaken in stages.

ITEM 6 DATE OF NEXT MEETING – 9.30AM TUESDAY 14 JULY 2015