

ITEM 1 WELCOME AND INTRODUCTIONS

The agenda was circulated to all committee members via email

ITEM 2 APOLOGIES AND LEAVE OF ABSENCE

See above

ITEM 3 DECLARATIONS OF INTEREST

None

ITEM 4 REPORTS

ITEM 5 GENERAL BUSINESSES

ITEM 6 NEXT MEETING

ITEM 58/13: Sydney Road, Manly – Proposed parking restriction (Item 58/13:14/10/2013)

SUMMARY

For Council to consider extending the length and days of operation of the existing 4P parking restriction on Sydney Road outside the Manly Oval.

REPORT

Council has considered extending the existing 4P parking restriction and days of the operation of the restriction on Sydney Road outside the Manly Oval (Figure 1).

Sydney Road on-street parking has a “4P 8:30am-6pm Mon- Fri” parking restriction, outside Manly Oval between Belgrave Street and the bus stop, as shown on the figure.1. The rest of the northern side of Sydney Road is unrestricted.

The unrestricted kerbside parking in this section of Sydney Road is generally fully occupied by commuters catching buses to work. The extension of 4P parking restrictions on Sydney Road from the bus stop to Birkley Road would restrict 32 parking spaces for commuters. However, the proposal would benefit the community by providing more parking turn over and better parking utilization outside the Manly Oval.

It is proposed that the days of operation be extended to include Saturday from 8:30am to 12:30pm.

DISCUSSION

The item was emailed to the committee members. The RMS representative raised concerns about the displacement of the all day parkers. It has been stated that by installing 4 hour parking, the people who park all day will be forced into the local streets which will create further complications for council. The RMS representative recommended that the item be further discussed at the next traffic committee. The Councillor Alan Le Surf supported the item to be discussed at the next traffic committee. No responses were received from The representative of Manly Police and the further. No responses were received from the Manly Police representative and Member for Manly's Office.

RECOMMENDATION

The below proposal will be further discussed at the next traffic committee for the final recommendation:

- Extends the existing 4P parking restriction on the northern side of Sydney Road to Birkley Road.
- Extends the days of operation to include Saturday 8:30am to 12:30pm.



Figure 1: Proposed changes on the existing parking restriction – Sydney Road, Manly

ITEM 59 /13 Ivanhoe Park, Manly – Extension of parking permit area (Item 59/13: 14/10/2013)

SUMMARY

For Council to consider the extension of parking permit scheme to include Arthur Street, Daintrey Street, Cohen Street, and Charles Street.

REPORT

Council has received some requests from residents that the 2P Parking Permit Scheme be introduced in some streets adjacent of the border of the existing Ivanhoe Park Parking Permit Area (Figure.1 & 2).

Concerns have been raised that the residents have difficulty finding parking space in these streets, as the parking spaces are usually occupied by commuters and people using other facilities on the adjacent streets.

In order to identify the need of provision of parking permit scheme, a parking survey has been undertaken in Arthur Street, Daintrey Street, Cohen Street, and Charles Street. It assesses the parking demand and parking spaces available on these streets. The survey has been undertaken during weekday in the morning after the time commuters park and catch public transport to their work.

The following is the result of the survey showing the available parking spaces on the streets:

Street Name	Available Parking Spaces (%)
Arthur Street	30%
Daintrey Street	45%
Cohen Street	20%
Charles Street	45%
Union Street	30%

Also, further surveys undertaken in other days show that the available parking spaces was similar in different times.

The introduction of 2P Parking Permit Scheme is intended to assist residents having limited off-street parking and difficulty parking near their residence. The investigations show that there are some parking spaces available for local residents in these streets. However, as the investigation has been conducted close to the school holiday period, it is recommended that the extension of the Ivanhoe Park parking permit be monitored in this area after school holiday.

DISCUSSION

The item was emailed to the committee members. The RMS representative commented that the extension of the resident parking scheme in Manly Local Government area would not be supported by Roads and Maritime Services. The RMS representative recommended that the item be further discussed at the next traffic committee. The Councillor Alan Le Surf agreed with having a discussion at the next traffic committee. No responses were received from the Manly Police representative and Member for Manly's Office.

RECOMMENDATION

It is recommended that Council undertakes further parking surveys, subject to the further discussion at the next traffic committee.

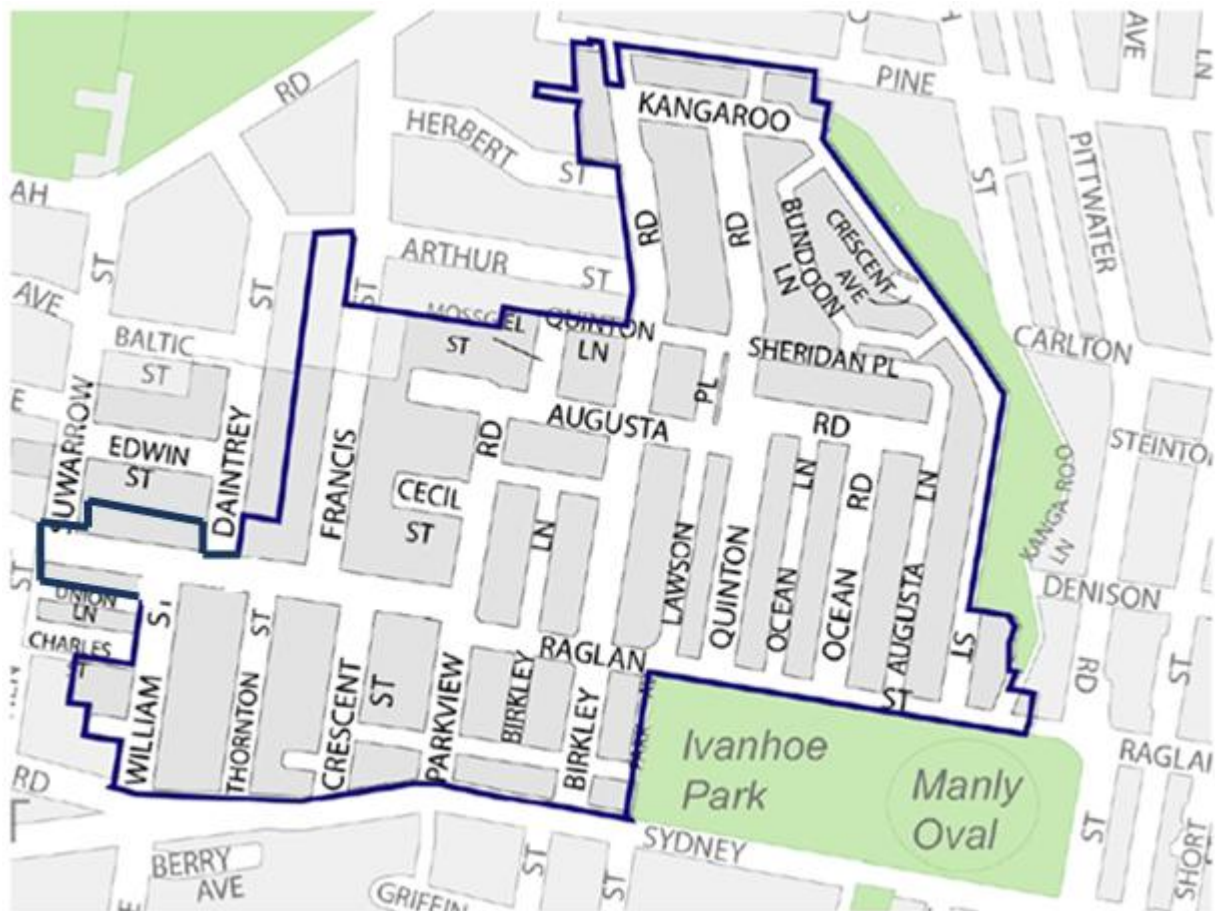


Figure 1: Existing Ivanhoe Park 2P Parking Permit Area

ITEM 60 /13: Sydney Road, Fairlight – Proposed No Stopping restriction (Item 60/13: 14/10/13)

SUMMARY

For Council to consider removing a ½ P parking space on Sydney Road at the Sydney Road / Woods Parade intersection. This change is proposed to increase visibility for vehicles turning right onto Sydney Road.

REPORT

Committee will recall that a proposal to introduce a “No Stopping” restriction was discussed at the July Traffic Committee. Council has received the request from the Fairlight Precinct forum that the parking on the south side of Sydney Road, to the east of Woods Parade, be reduced so that visibility exiting the road to the right and the safety of vehicles turning is improved.

It is proposed to remove one parking space (6m) and replace this length with No Stopping. Parking in this location is in high demand by users of the local businesses and shops, so reducing parking has been consulted with affected businesses and residents.

There were 20 consultation letters delivered to affected businesses and residents about the proposal. Council received only one reply from a shop owner that was against the proposal as the owner believed that there was not enough parking for people visiting the shops. Previously, Council has changed the parking restrictions on William Street to accommodate more parking for shop patrons.

DISCUSSION

The item was emailed to the committee members. The Councillor Alan Le Surf and RMS representatives supported the proposal. No responses were received from the representative of Manly Police and the Member of Manly.

RECOMMENDATION

It is recommended that Council remove one ½ P parking space on the south side of Sydney Road to the east of Woods Parade and change to No Stopping to improve visibility for drivers exiting Woods Parade.



Figure 1: Proposed parking restriction – Sydney Road, Fairlight

ITEM 61/13 Street Party Request – Pacific Parade, Manly (Item 61/13: 14/10/13)

REPORT

An application for a temporary road closure has been received by Council for Pacific Parade, Manly, between No. 7 and Balgowlah Road. This is to allow a Street Party as part of the Council's "Meet Your Street" initiative to be held on Thursday 31 October 2013 from 4:00pm to 7:00pm.

Pacific Parade is a local road with low traffic volumes. The implementation of temporary road closure in Pacific Parade, between Collingwood Street and Balgowlah Road (Figure 1) will prohibit traffic flow in this section. This would have a minimal impact on traffic as alternative routes are available and the road is not used by buses (see Figure 2). Access for pedestrians and cyclists will be maintained and the temporary closure will be managed with the attached Traffic Control Plan (TCP) and conditions in Appendix A.

DISCUSSION

The item was emailed to the committee members. The Councillor Alan Le Surf and the RMS representatives supported the proposal. No responses were received from the representative of Manly Police and the Member of Manly.

RECOMMENDATION

That a temporary road closure to be implemented in Pacific Parade, Manly, between Collingwood Street and Balgowlah Road on Thursday 31 October 2013 from 4:00pm to 7:00pm and be approved subject to standard conditions outlined in Appendix A.



Figure 1: Location of Proposed Street Party



Figure 2: Bus Route Map

ITEM 62/13 Street Party Request – Scale Parade, Balgowlah Heights (Item 62/13: 14/10/2013)

REPORT

An application for a temporary road closure has been received by Council for Scales Parade, Balgowlah Heights, between Lewis Street and Hilder Road. This is to allow a Street Party as part of the Council's "Meet Your Street" initiative to be held on Sunday 8 December 2013 from 3:30pm to 7:30pm.

Scales Parade is a local road with low traffic volumes. The implementation of temporary road closure in Scales Parade, between Lewis Street and Hilder Road (Figure 1) will prohibit traffic flow in this section. This would have a minimal impact on traffic as the alternative routes are available. The street is not used by buses (see Figure 2). Access for pedestrians and cyclists will be maintained and the temporary closure will be managed with the attached Traffic Control Plan (TCP) and conditions in Appendix A.

DISCUSSION

The item was emailed to the committee members. The Councillor Alan Le Surf and RMS representatives supported the proposal. No responses were received from the representative of Manly Police and the Member of Manly.

RECOMMENDATION

That a temporary road closure to be implemented in Scales Parade, between Lewis Street and Hilder Road on Sunday 8 December 2013 from 3:30pm to 7:30pm and be approved subject to standard conditions outlined in Appendix A.

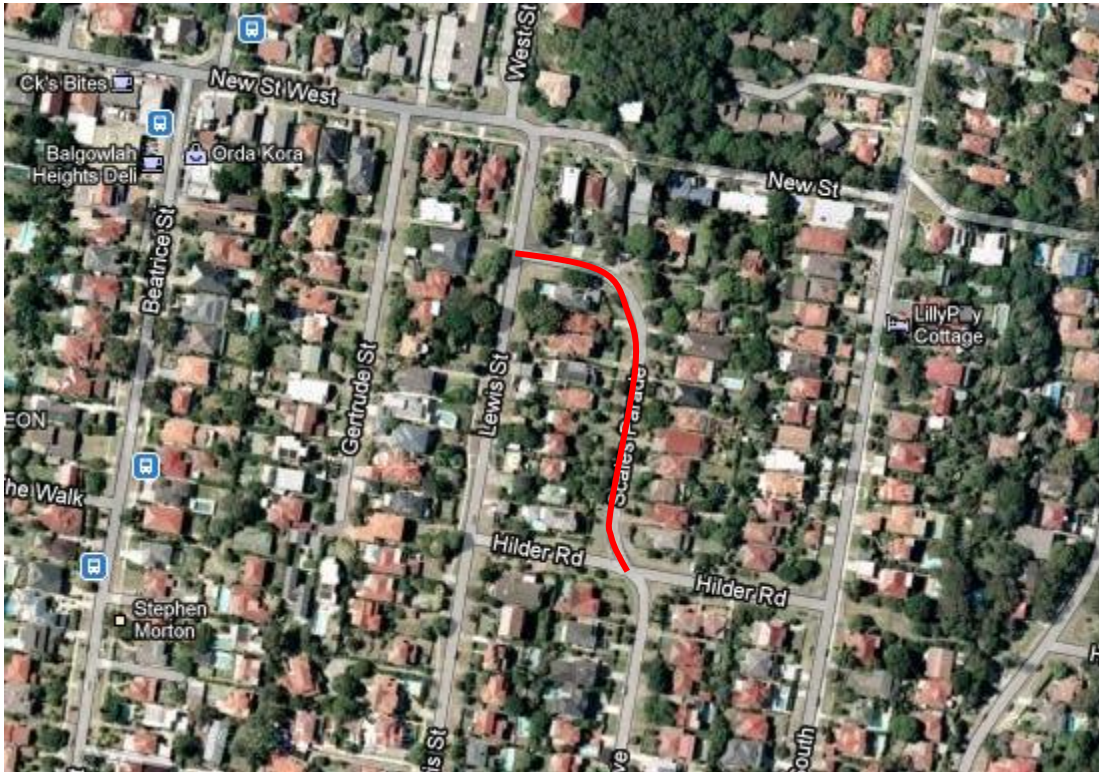


Figure 1: Location of Proposed Street Party

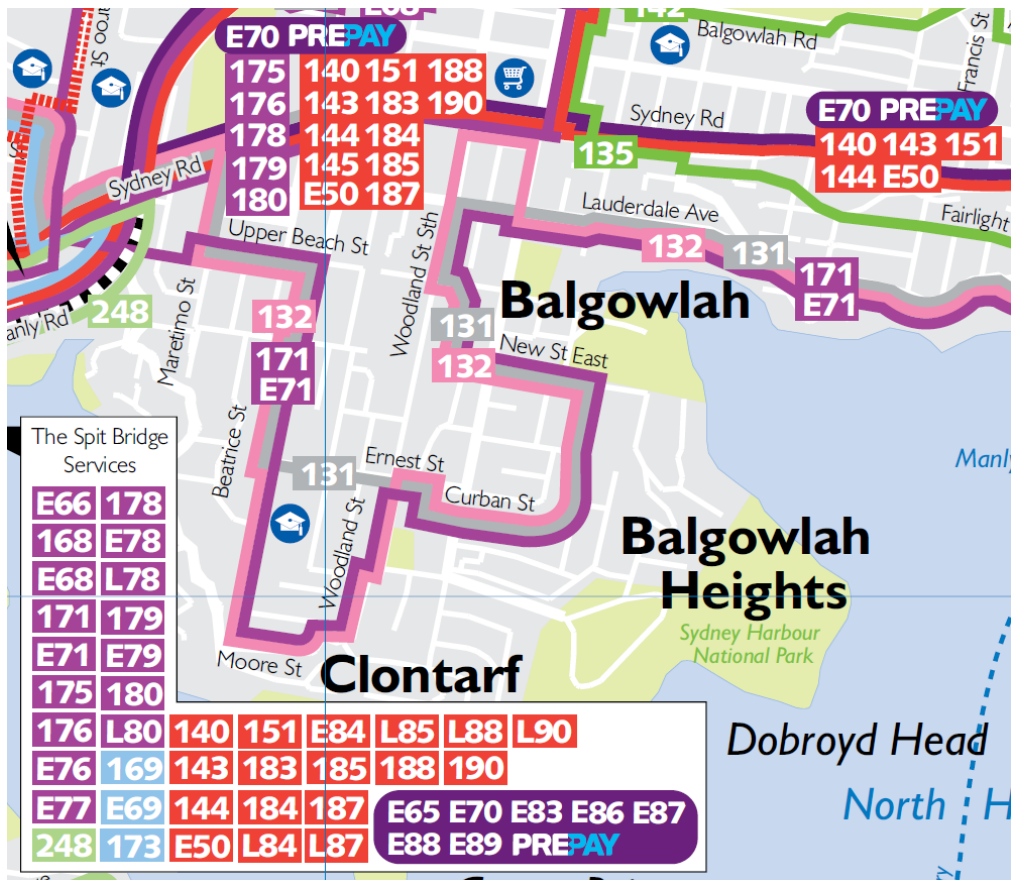


Figure 2: Bus Route Map

ITEM 63/13 Street Party Request – Bungaloe Avenue, Balgowlah (Item 63/13: 14/10/2013)

REPORT

An application for a temporary road closure has been received by Council for Bungaloe Avenue, Balgowlah, between Ernest Street and Hilder Road. This is to allow a Street Party as part of the Council's "Meet Your Street" initiative to be held on Thursday 31 October 2013 from 4:30pm to 7:30pm.

Bungaloe Avenue is a local road with low traffic volumes. The implementation of temporary road closure in Bungaloe Avenue, between Ernest Street and Hilder Road (Figure 1) will prohibit traffic flow in this section. This would have a minimal impact on traffic as the alternative routes are available. The street is not used by buses (see Figure 2). Access for pedestrians and cyclists will be maintained and the temporary closure will be managed with the attached Traffic Control Plan (TCP) and conditions in Appendix A.

DISCUSSION

The item was emailed to the committee members. The Councillor Alan Le Surf and RMS representatives supported the proposal. No responses were received from the representative of Manly Police and the Member of Manly.

RECOMMENDATION

That a temporary road closure to be implemented in Bungaloe Avenue, between Ernest Street and Hilder Road on Thursday October 2013 from 4:30pm to 7:30pm and be approved subject to standard conditions outlined in Appendix A.

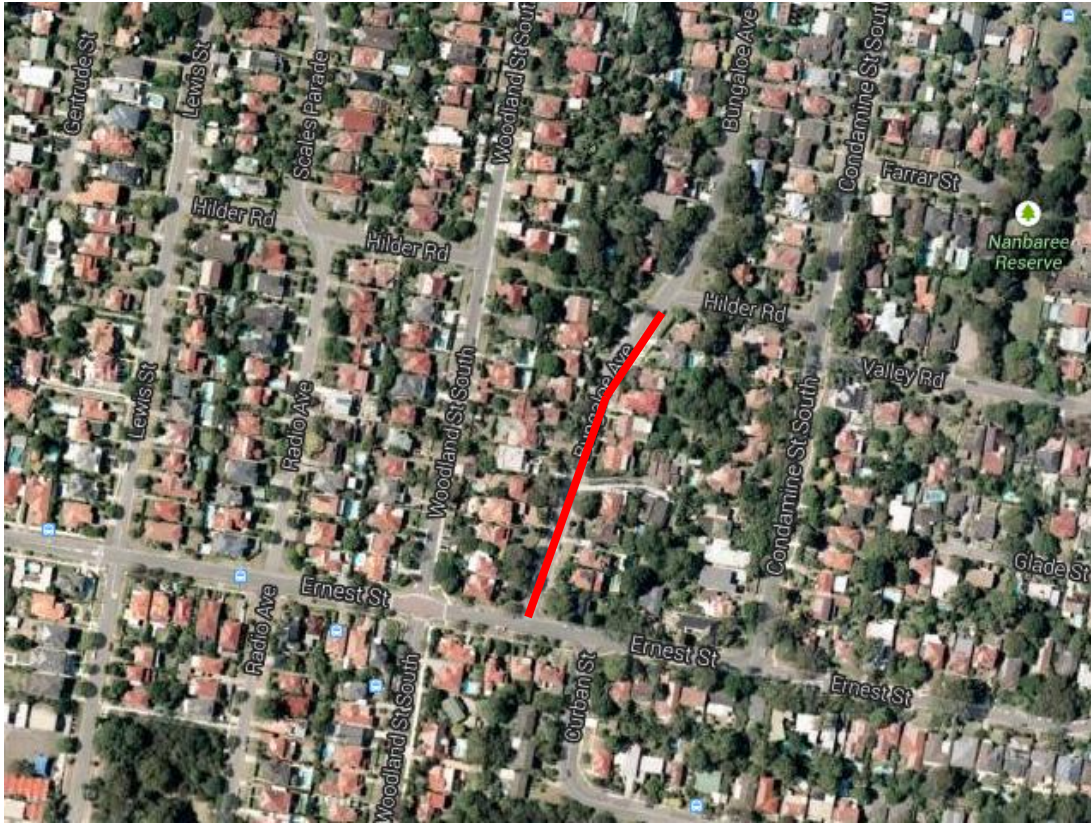


Figure 1: Location of Proposed Street Party

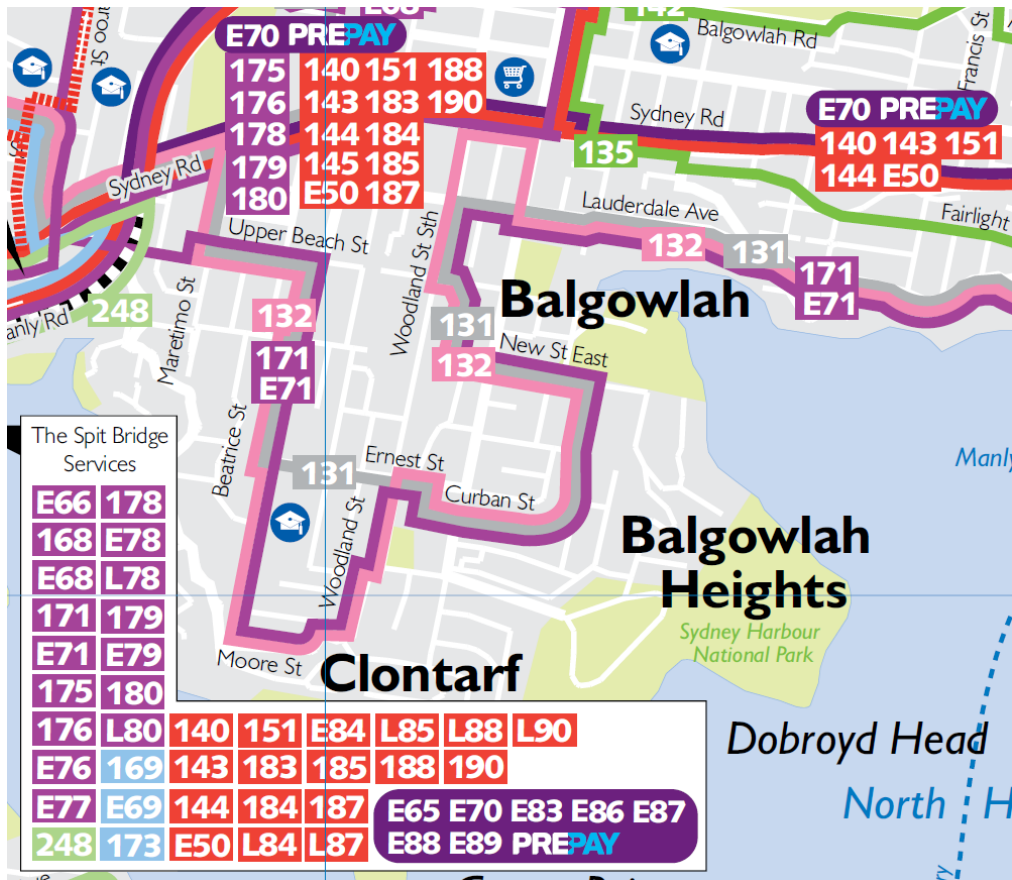


Figure 2: Bus Route Map

Appendix A:

I. Standard TCP

A Traffic Control Plan, TCP, has been developed using the RTA's Traffic Control at Work Sites Manual. The TCP outlines the signs and barriers that are to be used, the erection and removal processes and other requirements. In addition to the TCP, additional requirements are necessary to facilitate the road closure safely and with minimal disruption to the public. The issues that require addressing include:

- Access to and from the street by resident's vehicles ONLY in an emergency and emergency vehicle
- Traffic controllers need to be qualified.
- Appropriate erection and removal of traffic control devices.
- Adequate notification
- These issues are addressed in the conditions

Sign Type	Sign No.
Side Road Closed	T1 - 32
Road Closed	T 2 - 229
Barricade With Steady Amber Lights	N/A

Table 1: Signing Schedule

Depending on the type of street (open-ended or cul-de-sac), one of the following standard TCPs must be used.

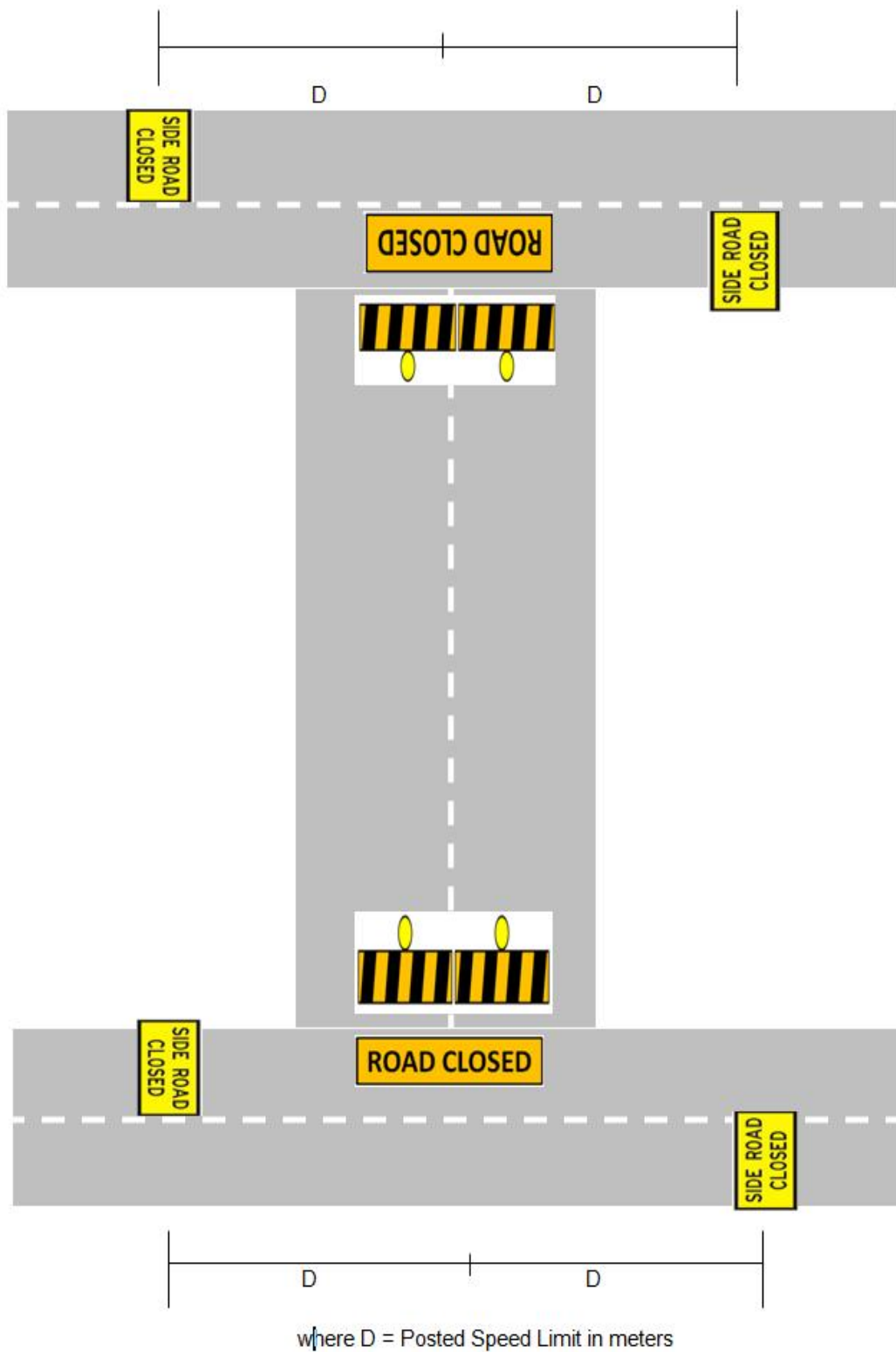
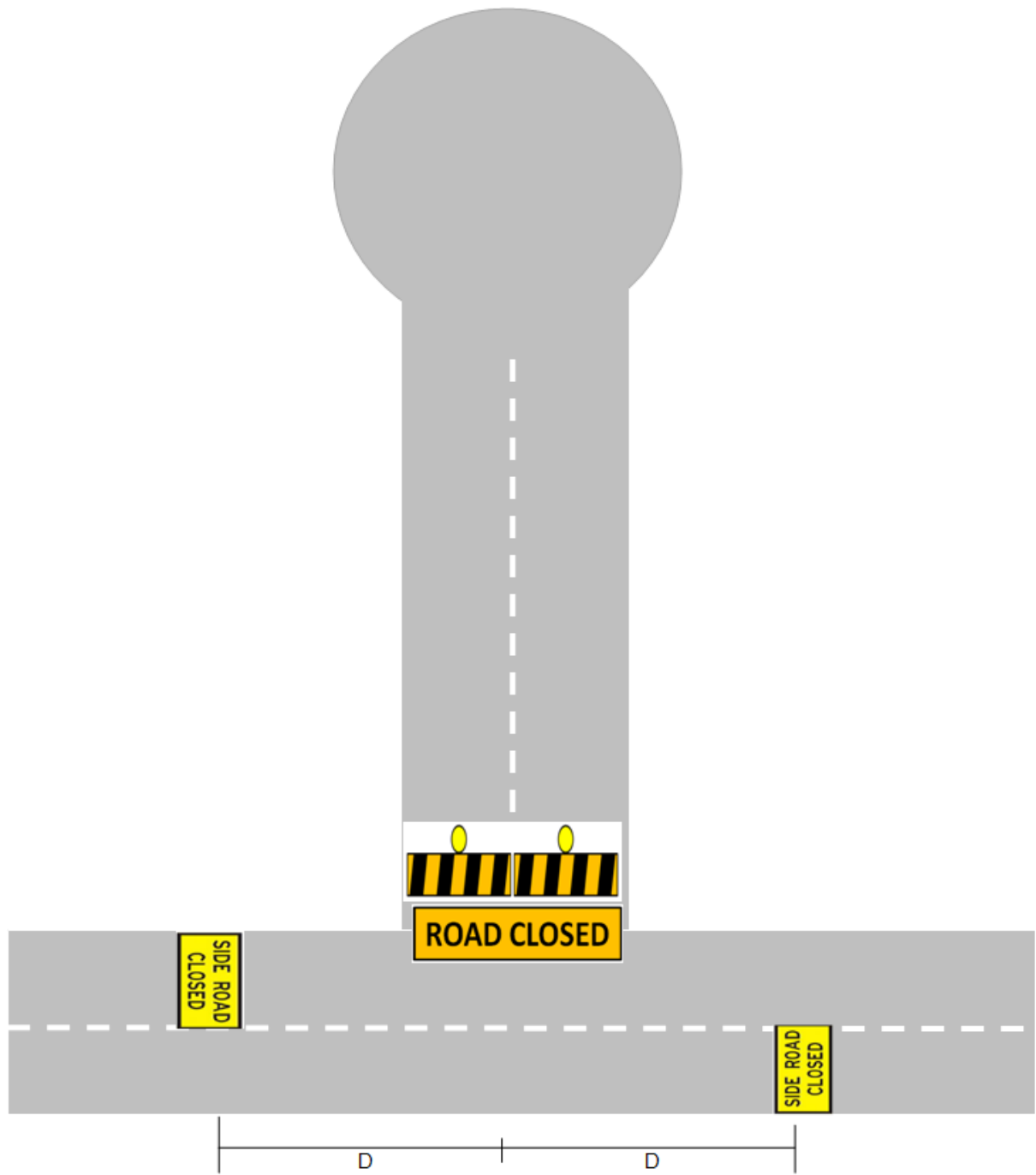


Figure 1: Standard TCP 1



where D = Posted Speed Limit in meters

Figure 2: Standard TCP 2

Notes:

1. All persons working on road must wear visibility vests or jackets as specified in the RTA's OH&S manual.
2. All signs must be approved Australian Standard Signs appropriate for right use.
3. The temporary road closure should be carried out in conjunction with the attached conditions and requirements

II. Standard Conditions

Resident Street Party Organiser will be responsible for:

1. That resident street party organiser shall submit a completed application form to Council at least 4 weeks prior to the event.
2. That resident street party organiser shall undertake a letterbox drop minimum two weeks prior to the event. The letter shall include that:
 - the proposed date and time of the street party
 - residents participate at their own risk
 - Access to and from the street by resident's vehicles ONLY in an emergency and emergency vehicle
 - A contact name and contact details for residents to communicate any objections to the road closure
 - A copy of the letter is to be provided to Council
3. One week in advance of the event the street party organiser will provide a statement to Council notifying that not more than 25% of the residents oppose the street party.
4. The resident street party organiser shall notify the Traffic Sergeant at the Manly Police Station to confirm that the street party will be going ahead on the proposed date.
5. The resident street party organiser shall ensure that noise is kept at an acceptable level and that it does not inconvenience the neighbouring community.
6. The resident street party organiser shall ensure that all rubbish is removed from the site at the completion of the street party.
7. The resident street party organiser shall notify all emergency service authorities.

Council's Events Team will be responsible for:

1. Ensuring the resident street party organiser has completed the induction and has lodged the application form and understands the conditions to conduct the event.
2. The implementation of the TMP and ensuring the Closure and Road Opening is undertaken by qualified and certified people.
3. The road closure points are controlled by qualified and certified people for the duration of the event. This will involve engaging an external contractor to man the road closure barricades for the duration of the event. The estimated cost to Council to facilitate this is \$600 per street party, based on a four hour minimum.

4. The street party be restricted to local streets (not collector, regional and state roads) in a very low traffic environment such as a dead-end or cul-de-sac (consult Council's Traffic and Transport section).
5. The street party shall be limited to not more than 100 people at any given time during the duration of the event.
6. Ensuring the applicant has obtained the concurrence from the Police.
7. Completing a risk management plan for each street party application and submitting this to Council's Insurers to confirm cover for event
8. The funding and coordinating of promotion of program and supply amenities/infrastructure to the street party including road closure barricades/signage, bins and portable toilets within approved budget.

Council's Traffic Management Team will be responsible for:

1. Advising the Events Team if a street is deemed suitable for road to be closed.
2. Preparing the TCP and submitting to Council for approval. The TCP will indicate the recommended signage to be used to ensure traffic managed effectively with minimum disruption.

Additional Terms and Conditions:

1. Street parties should be of a maximum four hours in duration and should be held during daylight hours only.
2. If a street party organiser fails to adhere to the terms and conditions set out in the letter of consent that Council have the discretion to fine the street party organiser up to a maximum of \$500. E.g. if the street party organiser extends the duration of the party or exceeds the maximum numbers permitted at the party.

Signs to be used:



ROAD CLOSED SIGN



SIDE ROAD CLOSED SIGN